

## Product datasheet for **TA379322**

### Neurexin 1 (NRXN1) Rabbit Polyclonal Antibody

#### Product data:

Product Type:	Primary Antibodies
Applications:	WB
Recommended Dilution:	WB,1:500 - 1:2000
Reactivity:	Human, Mouse
Modifications:	Unmodified
Host:	Rabbit
Isotype:	IgG
Clonality:	Polyclonal
Immunogen:	Recombinant fusion protein containing a sequence corresponding to amino acids 31-310 of human NRXN1 (NP_001129131.1).
Formulation:	Buffer: PBS with 0.02% sodium azide,50% glycerol,pH7.3.
Concentration:	lot specific
Purification:	Affinity purification
Conjugation:	Unconjugated
Storage:	Store at -20°C. Avoid freeze / thaw cycles.
Stability:	Shelf life: one year from despatch.
Predicted Protein Size:	15kDa/46kDa/161kDa/164kDa/169kDa
Gene Name:	neurexin 1
Database Link:	<a href="#">Entrez Gene 9378 Human P58400</a>



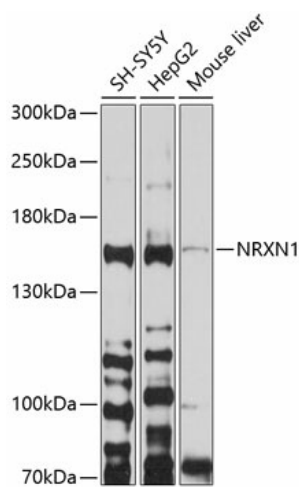
[View online »](#)

**Background:**

This gene encodes a single-pass type I membrane protein that belongs to the neurexin family. Neurexins are cell-surface receptors that bind neuroligins to form Ca(2+)-dependent neurexin/neuroligin complexes at synapses in the central nervous system. This complex is required for efficient neurotransmission, and is involved in the formation of synaptic contacts. Three members of this gene family have been studied in detail and are estimated to generate over 3,000 variants through the use of two alternative promoters (alpha and beta) and extensive alternative splicing in each family member. Recently, a third promoter (gamma) was identified for this gene in the 3' region. The RefSeq project has decided to create only a few representative transcript variants of the multitude that are possible. Mutations in this gene are associated with Pitt-Hopkins-like syndrome-2.

**Synonyms:**

DKFZp313P2036; FLJ35941; KIAA0578; OTTHUMP00000200525

**Product images:**

Western blot analysis of extracts of various cell lines, using NRXN1 antibody (TA379322) at 1:1000 dilution. | Secondary antibody: HRP Goat Anti-Rabbit IgG (H+L) at 1:10000 dilution. | Lysates/proteins: 25ug per lane. | Blocking buffer: 3% nonfat dry milk in TBST. | Detection: ECL Basic Kit . | Exposure time: 90s.