

Product datasheet for TA379312S

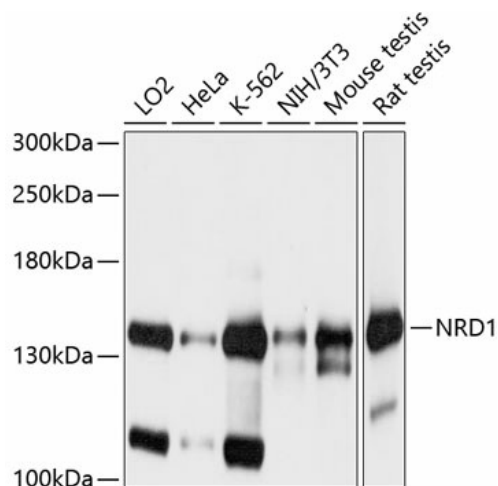
Nardilysin (NRDC) Rabbit Polyclonal Antibody

Product data:

Product Type:	Primary Antibodies
Applications:	ELISA, WB
Recommended Dilution:	WB, 1:200 - 1:2000 ELISA, Recommended starting concentration is 1 µg/mL. Please optimize the concentration based on your specific assay requirements.
Reactivity:	Human, Mouse, Rat
Modifications:	Unmodified
Host:	Rabbit
Isotype:	IgG
Clonality:	Polyclonal
Formulation:	Buffer: PBS with 0.02% sodium azide, 50% glycerol, pH 7.3.
Concentration:	lot specific
Purification:	Affinity purification
Conjugation:	Unconjugated
Storage:	Store at -20°C. Avoid freeze / thaw cycles.
Stability:	Shelf life: one year from despatch.
Predicted Protein Size:	132kDa
Gene Name:	nardilysin convertase
Database Link:	Entrez Gene 4898 Human O43847
Background:	This gene encodes a zinc-dependent endopeptidase that cleaves peptide substrates at the N-terminus of arginine residues in dibasic moieties and is a member of the peptidase M16 family. This protein interacts with heparin-binding EGF-like growth factor and plays a role in cell migration and proliferation. Multiple transcript variants encoding different isoforms have been found for this gene.


[View online »](#)

Product images:



Western blot analysis of various lysates using NRD1 Rabbit pAb (TA379312S) at 1:1000 dilution. Secondary antibody: HRP-conjugated Goat anti-Rabbit IgG (H+L) (AS014) at 1:10000 dilution. Lysates/proteins: 25µg per lane. Blocking buffer: 3% nonfat dry milk in TBST. Detection: ECL Basic Kit (RM00020). Exposure time: 1s.