

Product datasheet for **TA379312**

Nardilysin (NRDC) Rabbit Polyclonal Antibody

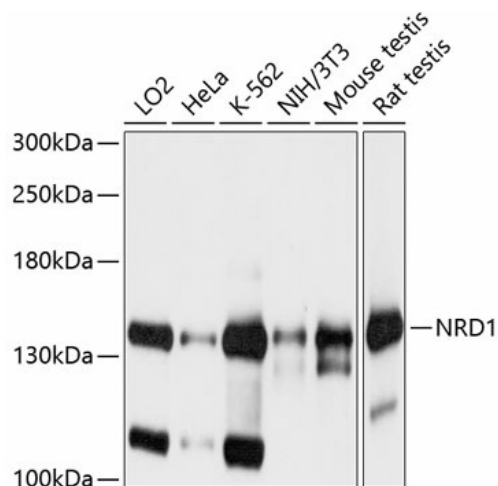
Product data:

Product Type:	Primary Antibodies
Applications:	WB
Recommended Dilution:	WB,1:200 - 1:2000 IHC,1:50 - 1:200
Reactivity:	Human, Mouse, Rat
Modifications:	Unmodified
Host:	Rabbit
Isotype:	IgG
Clonality:	Polyclonal
Immunogen:	Recombinant fusion protein containing a sequence corresponding to amino acids 160-400 of human NRD1 (NP_001095132.1).
Formulation:	Buffer: PBS with 0.02% sodium azide,50% glycerol,pH7.3.
Concentration:	lot specific
Purification:	Affinity purification
Conjugation:	Unconjugated
Storage:	Store at -20°C. Avoid freeze / thaw cycles.
Stability:	Shelf life: one year from despatch.
Predicted Protein Size:	131kDa/139kDa
Gene Name:	nardilysin convertase
Database Link:	Entrez Gene 4898 Human O43847
Background:	This gene encodes a zinc-dependent endopeptidase that cleaves peptide substrates at the N-terminus of arginine residues in dibasic moieties and is a member of the peptidase M16 family. This protein interacts with heparin-binding EGF-like growth factor and plays a role in cell migration and proliferation. Multiple transcript variants encoding different isoforms have been found for this gene.



[View online »](#)

Product images:



Western blot analysis of extracts of various cell lines, using NRD1 antibody (TA379312) at 1:1000 dilution. | Secondary antibody: HRP Goat Anti-Rabbit IgG (H+L) at 1:10000 dilution. | Lysates/proteins: 25ug per lane. | Blocking buffer: 3% nonfat dry milk in TBST. | Detection: ECL Basic Kit. | Exposure time: 1s.