

## Product datasheet for **TA379309**

### NRBF2 Rabbit Polyclonal Antibody

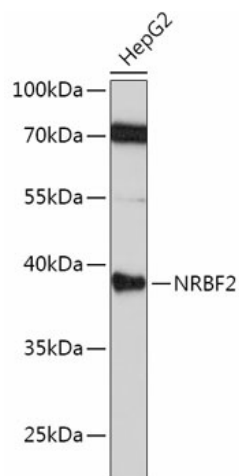
#### Product data:

Product Type:	Primary Antibodies
Applications:	IF, WB
Recommended Dilution:	WB,1:500 - 1:2000 IF,1:10 - 1:100
Reactivity:	Human, Mouse, Rat
Modifications:	Unmodified
Host:	Rabbit
Isotype:	IgG
Clonality:	Polyclonal
Immunogen:	Recombinant fusion protein containing a sequence corresponding to amino acids 10-220 of human NRBF2 (NP_110386.2).
Formulation:	PBS with 0.09% Sodium azide,50% glycerol,pH7.3.
Concentration:	lot specific
Purification:	Affinity purification
Conjugation:	Unconjugated
Storage:	Store at -20°C. Avoid freeze / thaw cycles.
Stability:	Shelf life: one year from despatch.
Predicted Protein Size:	26kDa/31kDa/32kDa
Gene Name:	nuclear receptor binding factor 2
Database Link:	<a href="#">Entrez Gene 29982 Human Q96F24</a>
Background:	May modulate transcriptional activation by target nuclear receptors. Can act as transcriptional activator (in vitro).
Synonyms:	COPR; COPR1; COPR2; DKFZp564C1664; FLJ30395; NRBF-2



[View online »](#)

## Product images:



Western blot analysis of extracts of HepG2 cells, using NRBF2 antibody (TA379309) at 1:1000 dilution. | Secondary antibody: HRP Goat Anti-Rabbit IgG (H+L) at 1:10000 dilution. | Lysates/proteins: 25ug per lane. | Blocking buffer: 3% nonfat dry milk in TBST. | Detection: ECL Basic Kit . | Exposure time: 3min.