

## Product datasheet for **TA379304**

### NR5A2 Rabbit Polyclonal Antibody

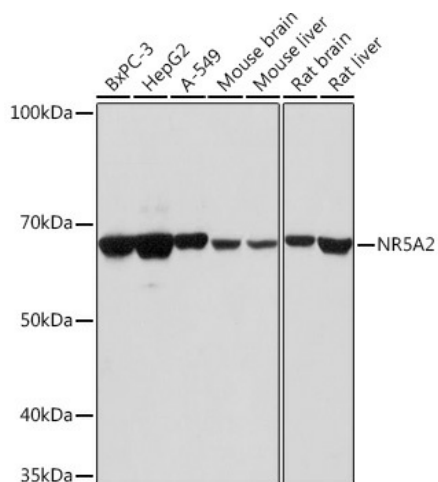
#### Product data:

|                         |   |
|-------------------------|---|
| Product Type:           | Primary Antibodies  |
| Applications:           | ICC/IF, IHC, WB   |
| Recommended Dilution:   | WB,1:500 - 1:2000<br>IHC,1:50 - 1:200<br>IF,1:50 - 1:200  |
| Reactivity:             | Human, Mouse, Rat   |
| Modifications:          | Unmodified  |
| Host:                   | Rabbit  |
| Isotype:                | IgG   |
| Clonality:              | Polyclonal  |
| Immunogen:              | Recombinant fusion protein containing a sequence corresponding to amino acids 1-140 of human NR5A2 (NP_003813.1).   |
| Formulation:            | PBS with 0.05% proclin300,50% glycerol,pH7.3.   |
| Concentration:          | lot specific  |
| Purification:           | Affinity purification   |
| Conjugation:            | Unconjugated  |
| Storage:                | Store at -20°C. Avoid freeze / thaw cycles.   |
| Stability:              | Shelf life: one year from despatch.   |
| Predicted Protein Size: | 42kDa/53kDa/56kDa/61kDa   |
| Gene Name:              | nuclear receptor subfamily 5 group A member 2   |
| Database Link:          | <a href="#">Entrez Gene 2494 Human O00482</a>   |
| Background:             | The protein encoded by this gene is a DNA-binding zinc finger transcription factor and is a member of the fushi tarazu factor-1 subfamily of orphan nuclear receptors. The encoded protein is involved in the expression of genes for hepatitis B virus and cholesterol biosynthesis, and may be an important regulator of embryonic development. |
| Synonyms:               | B1F; B1F2; CPF; FTF; FTZ-F1; FTZ-F1beta; hB1F; hB1F-2; LRH-1; LRH1  |



[View online »](#)

## Product images:



Western blot analysis of extracts of various cell lines, using NR5A2 antibody (TA379304) at 1:1000 dilution. | Secondary antibody: HRP Goat Anti-Rabbit IgG (H+L) at 1:10000 dilution. | Lysates/proteins: 25ug per lane. | Blocking buffer: 3% nonfat dry milk in TBST. | Detection: ECL Basic Kit. | Exposure time: 30s.