

## Product datasheet for **TA379295S**

### NR2F2 Rabbit Polyclonal Antibody

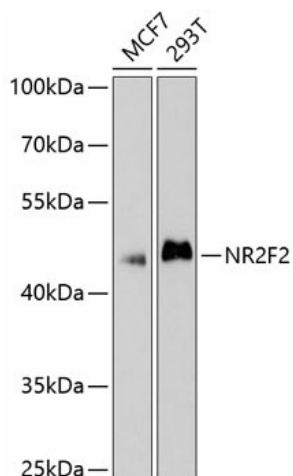
#### Product data:

Product Type:	Primary Antibodies
Applications:	ICC/IF, IHC, WB
Recommended Dilution:	WB,1:500 - 1:2000 IHC,1:100 - 1:200 IF,1:50 - 1:200
Reactivity:	Human, Mouse, Rat
Modifications:	Unmodified
Host:	Rabbit
Isotype:	IgG
Clonality:	Polyclonal
Immunogen:	A synthetic peptide corresponding to a sequence within amino acids 1-100 of human NR2F2 (NP_066285.1).
Formulation:	Buffer: PBS with 0.02% sodium azide,50% glycerol,pH7.3.
Concentration:	lot specific
Purification:	Affinity purification
Conjugation:	Unconjugated
Storage:	Store at -20°C. Avoid freeze / thaw cycles.
Stability:	Shelf life: one year from despatch.
Predicted Protein Size:	29kDa/31kDa/45kDa
Gene Name:	nuclear receptor subfamily 2 group F member 2
Database Link:	<a href="#">Entrez Gene 7026 Human P24468</a>
Background:	This gene encodes a member of the steroid thyroid hormone superfamily of nuclear receptors. The encoded protein is a ligand inducible transcription factor that is involved in the regulation of many different genes. Alternate splicing results in multiple transcript variants.
Synonyms:	ARP-1; ARP1; COUP-TF2; COUP-TFII; COUPTFB; MGC117452; SVP40; TFCOUP2

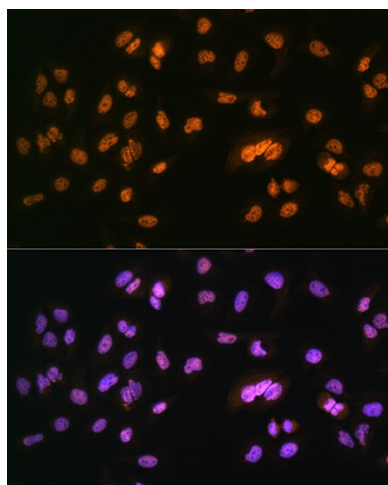


[View online »](#)

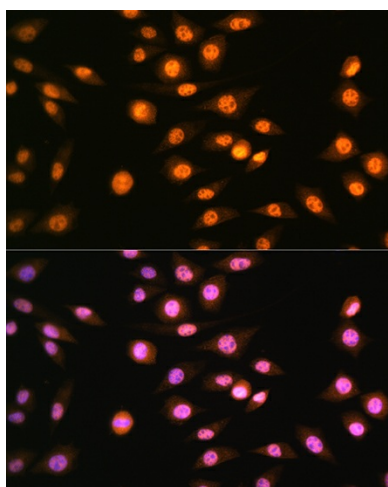
## Product images:



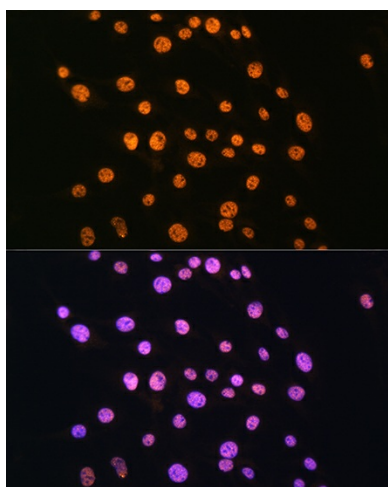
Western blot analysis of extracts of various cell lines, using NR2F2 antibody ([TA379295]) at 1:1000 dilution. | Secondary antibody: HRP Goat Anti-Rabbit IgG (H+L) at 1:10000 dilution. | Lysates/proteins: 25ug per lane. | Blocking buffer: 3% nonfat dry milk in TBST. | Detection: ECL Basic Kit . | Exposure time: 90s.



Immunofluorescence analysis of U2OS cells using NR2F2 Rabbit pAb ([TA379295]) at dilution of 1:100. Blue: DAPI for nuclear staining.



Immunofluorescence analysis of L929 cells using NR2F2 Rabbit pAb ([TA379295]) at dilution of 1:100. Blue: DAPI for nuclear staining.



Immunofluorescence analysis of C6 cells using NR2F2 Rabbit pAb ([TA379295]) at dilution of 1:100. Blue: DAPI for nuclear staining.