

## Product datasheet for **TA379293**

### NR2E1 Rabbit Polyclonal Antibody

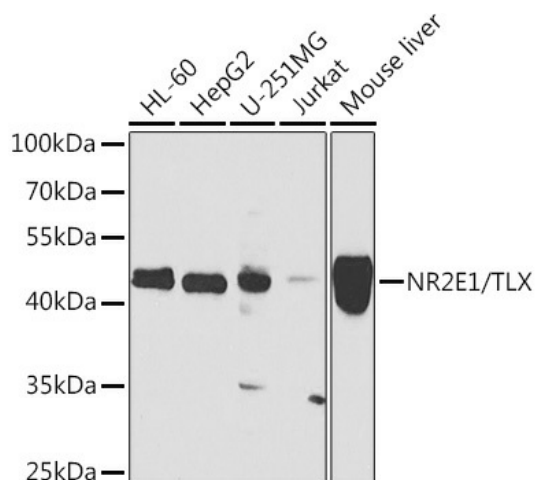
#### Product data:

Product Type:	Primary Antibodies
Applications:	IP, WB
Recommended Dilution:	WB,1:500 - 1:2000 IF,1:50 - 1:100 IP,1:50 - 1:100
Reactivity:	Human, Mouse
Modifications:	Unmodified
Host:	Rabbit
Isotype:	IgG
Clonality:	Polyclonal
Immunogen:	Recombinant fusion protein containing a sequence corresponding to amino acids 106-385 of human NR2E1/TLX (NP_003260.1).
Formulation:	Buffer: PBS with 0.02% sodium azide,50% glycerol,pH7.3.
Concentration:	lot specific
Purification:	Affinity purification
Conjugation:	Unconjugated
Storage:	Store at -20°C. Avoid freeze / thaw cycles.
Stability:	Shelf life: one year from despatch.
Predicted Protein Size:	42kDa/46kDa
Gene Name:	nuclear receptor subfamily 2 group E member 1
Database Link:	<a href="#">Entrez Gene 7101 Human Q9Y466</a>
Background:	The protein encoded by this gene is an orphan receptor involved in retinal development. The encoded protein also regulates adult neural stem cell proliferation and may be involved in control of aggressive behavior. Two transcript variants encoding different isoforms have been found for this gene.
Synonyms:	hTII; TII; TLX; XTLL



[View online »](#)

## Product images:



Western blot analysis of extracts of various cell lines, using NR2E1/TLX antibody (TA379293) at 1:1000 dilution. | Secondary antibody: HRP Goat Anti-Rabbit IgG (H+L) at 1:10000 dilution. | Lysates/proteins: 25ug per lane. | Blocking buffer: 3% nonfat dry milk in TBST. | Detection: ECL Basic Kit. | Exposure time: 90s.