

## Product datasheet for **TA379282S**

### NR1D1 Rabbit Polyclonal Antibody

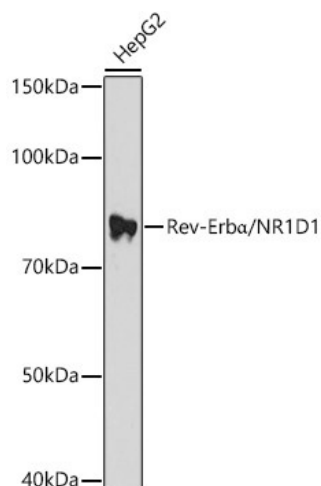
#### Product data:

Product Type:	Primary Antibodies
Applications:	ICC/IF, IHC, WB
Recommended Dilution:	WB,1:500 - 1:2000 IHC,1:50 - 1:200 IF,1:50 - 1:200
Reactivity:	Human, Mouse, Rat
Host:	Rabbit
Isotype:	IgG
Clonality:	Polyclonal
Immunogen:	Recombinant protein of human Rev-Erba/Rev-Erba/NR1D1.
Formulation:	Buffer: PBS with 0.02% sodium azide,50% glycerol,pH7.3.
Concentration:	lot specific
Purification:	Affinity purification
Conjugation:	Unconjugated
Storage:	Store at -20°C. Avoid freeze / thaw cycles.
Stability:	Shelf life: one year from despatch.
Predicted Protein Size:	66kDa
Gene Name:	nuclear receptor subfamily 1 group D member 1
Database Link:	<a href="#">Entrez Gene 9572 Human P20393</a>
Background:	This gene encodes a transcription factor that is a member of the nuclear receptor subfamily 1. The encoded protein is a ligand-sensitive transcription factor that negatively regulates the expression of core clock proteins. In particular this protein represses the circadian clock transcription factor aryl hydrocarbon receptor nuclear translocator-like protein 1 (ARNTL). This protein may also be involved in regulating genes that function in metabolic, inflammatory and cardiovascular processes.
Synonyms:	ear-1; EAR1; hRev; Rev-erbA-alpha; Rev-ErbAalpha; THRA1; THRAL

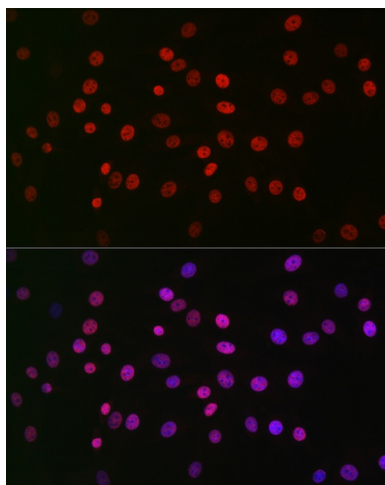


[View online »](#)

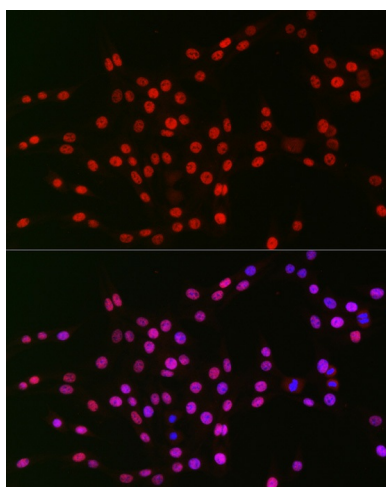
## Product images:



Western blot analysis of extracts of HepG2 cells, using Rev-Erba/NR1D1 antibody ([TA379282]) at 1:1000 dilution. | Secondary antibody: HRP Goat Anti-Rabbit IgG (H+L) at 1:10000 dilution. | Lysates/proteins: 25ug per lane. | Blocking buffer: 3% nonfat dry milk in TBST. | Detection: ECL Basic Kit . | Exposure time: 180s.



Immunofluorescence analysis of NIH/3T3 cells using Rev-Erba/NR1D1 Rabbit pAb ([TA379282]) at dilution of 1:50 (40x lens). Blue: DAPI for nuclear staining.



Immunofluorescence analysis of PC-12 cells using Rev-Erb $\alpha$ /NR1D1 Rabbit pAb ([TA379282]) at dilution of 1:50 (40x lens). Blue: DAPI for nuclear staining.