

Product datasheet for **TA379260**

Nucleophosmin (NPM1) Rabbit Polyclonal Antibody

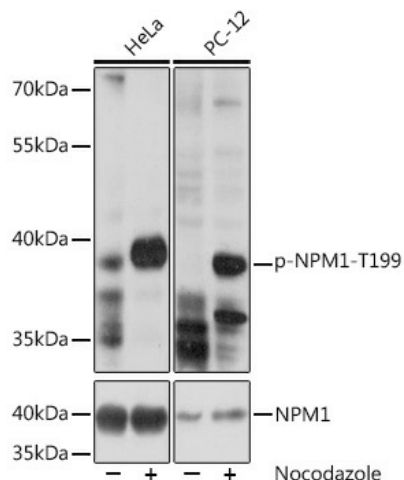
Product data:

| | |
|-------------------------|--|
| Product Type: | Primary Antibodies |
| Applications: | WB |
| Recommended Dilution: | WB,1:500 - 1:2000 |
| Reactivity: | Human |
| Modifications: | Phospho T199 |
| Host: | Rabbit |
| Isotype: | IgG |
| Clonality: | Polyclonal |
| Immunogen: | A synthetic phosphorylated peptide around T199 of human NPM1 (NP_001032827.1). |
| Formulation: | Buffer: PBS with 0.02% sodium azide,50% glycerol,pH7.3. |
| Concentration: | lot specific |
| Purification: | Affinity purification |
| Conjugation: | Unconjugated |
| Storage: | Store at -20°C. Avoid freeze / thaw cycles. |
| Stability: | Shelf life: one year from despatch. |
| Predicted Protein Size: | 28kDa/29kDa/32kDa |
| Gene Name: | nucleophosmin (nucleolar phosphoprotein B23, numatrin) |
| Database Link: | Entrez Gene 4869 Human P06748 |
| Background: | This gene encodes a phosphoprotein which moves between the nucleus and the cytoplasm. The gene product is thought to be involved in several processes including regulation of the ARF/p53 pathway. A number of genes are fusion partners have been characterized, in particular the anaplastic lymphoma kinase gene on chromosome 2. Mutations in this gene are associated with acute myeloid leukemia. More than a dozen pseudogenes of this gene have been identified. Alternative splicing results in multiple transcript variants. |
| Synonyms: | B23; MGC104254; NPM; Numatrin |



[View online »](#)

Product images:



Western blot analysis of extracts of various cell lines, using Phospho-NPM1-T199 pAb (TA379260) at 1:1000 dilution or NPM1 antibody (A17983). HeLa cells were treated by nocodazole (50 ng/mL) at 37°C for 20 hours. PC-12 cells were treated by Nocodazole (1 µg/mL) at 37°C for 16 hours. | Secondary antibody: HRP Goat Anti-Rabbit IgG (H+L) at 1:10000 dilution. | Lysates/proteins: 25ug per lane. | Blocking buffer: 3% nonfat dry milk in TBST. | Detection: ECL Basic Kit . | Exposure time: 10s.