

Product datasheet for **TA379254S**

NPHP3 Rabbit Polyclonal Antibody

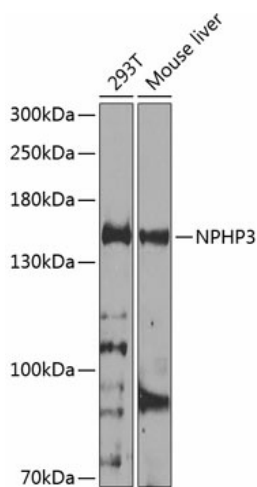
Product data:

Product Type:	Primary Antibodies
Applications:	ELISA, WB
Recommended Dilution:	WB, 1:200 - 1:2000 ELISA, Recommended starting concentration is 1 µg/mL. Please optimize the concentration based on your specific assay requirements.
Reactivity:	Human, Mouse
Modifications:	Unmodified
Host:	Rabbit
Isotype:	IgG
Clonality:	Polyclonal
Formulation:	Buffer: PBS with 0.02% sodium azide, 50% glycerol, pH 7.3.
Concentration:	lot specific
Purification:	Affinity purification
Conjugation:	Unconjugated
Storage:	Store at -20°C. Avoid freeze / thaw cycles.
Stability:	Shelf life: one year from despatch.
Predicted Protein Size:	151kDa
Gene Name:	nephronophthisis 3 (adolescent)
Database Link:	Entrez Gene 27031 Human Q7Z494
Background:	This gene encodes a protein containing a coiled-coil (CC) domain, a tubulin-tyrosine ligase (TTL) domain, and a tetratricopeptide repeat (TPR) domain. The encoded protein interacts with nephrocystin, it is required for normal ciliary development, and it functions in renal tubular development. Mutations in this gene are associated with nephronophthisis type 3, and also with renal-hepatic-pancreatic dysplasia, and Meckel syndrome type 7. Naturally occurring read-through transcripts exist between this gene and the downstream ACAD11 (acyl-CoA dehydrogenase family, member 11) gene.


[View online »](#)

Synonyms: DKFZp667K242; DKFZp781K1312; FLJ30691; FLJ36696; KIAA2000; MGC78666; nephrocystin-3; NPH3

Product images:



Western blot analysis of various lysates using NPHP3 Rabbit pAb ([TA379254]) at 1:1000 dilution.

Secondary antibody: HRP-conjugated Goat anti-Rabbit IgG (H+L) (AS014) at 1:10000 dilution.

Lysates/proteins: 25µg per lane.

Blocking buffer: 3% nonfat dry milk in TBST.

Detection: ECL Basic Kit (RM00020).

Exposure time: 30s.