

Product datasheet for **TA379251**

FMRFamide (NPFF) Rabbit Polyclonal Antibody

Product data:

Product Type:	Primary Antibodies
Applications:	WB
Recommended Dilution:	WB,1:500 - 1:2000
Reactivity:	Human, Rat
Modifications:	Unmodified
Host:	Rabbit
Isotype:	IgG
Clonality:	Polyclonal
Immunogen:	Recombinant fusion protein containing a sequence corresponding to amino acids 34-113 of human NPFF (NP_003708.1).
Formulation:	Buffer: PBS with 0.02% sodium azide,50% glycerol,pH7.3.
Concentration:	lot specific
Purification:	Affinity purification
Conjugation:	Unconjugated
Storage:	Store at -20°C. Avoid freeze / thaw cycles.
Stability:	Shelf life: one year from despatch.
Predicted Protein Size:	12kDa
Gene Name:	neuropeptide FF-amide peptide precursor
Database Link:	Entrez Gene 8620 Human O15130

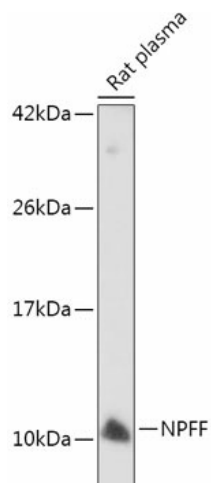
Background: This gene encodes a member of the FMRFamide related peptide (FARP) family of neuropeptides. The encoded preproprotein is proteolytically processed to generate multiple amidated peptides. These peptides may play a role in the regulation of heart rate and blood pressure and the modulation of morphine-induced antinociception. Patients with hypertension exhibit decreased expression of the encoded protein. Alternative splicing results in multiple transcript variants, at least one of which encodes an isoform that is proteolytically processed.



[View online »](#)

Synonyms: FMRFAL

Product images:



Western blot analysis of extracts of Rat plasma, using NPFF antibody (TA379251) at 1:500 dilution. | Secondary antibody: HRP Goat Anti-Rabbit IgG (H+L) at 1:10000 dilution. | Lysates/proteins: 25ug per lane. | Blocking buffer: 3% nonfat dry milk in TBST. | Detection: ECL Enhanced Kit. | Exposure time: 5min.