

Product datasheet for **TA379250**

NPEPL1 Rabbit Polyclonal Antibody

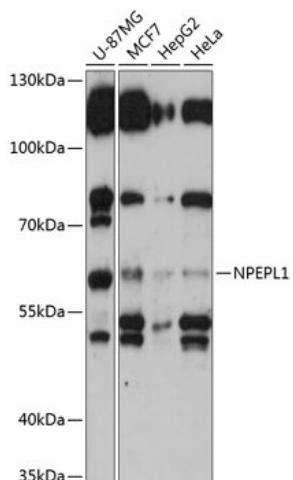
Product data:

Product Type:	Primary Antibodies
Applications:	WB
Recommended Dilution:	WB,1:500 - 1:2000
Reactivity:	Human, Mouse
Modifications:	Unmodified
Host:	Rabbit
Isotype:	IgG
Clonality:	Polyclonal
Immunogen:	Recombinant fusion protein containing a sequence corresponding to amino acids 374-523 of human NPEPL1 (NP_078939.3).
Formulation:	Buffer: PBS with 0.02% sodium azide,50% glycerol,pH7.3.
Concentration:	lot specific
Purification:	Affinity purification
Conjugation:	Unconjugated
Storage:	Store at -20°C. Avoid freeze / thaw cycles.
Stability:	Shelf life: one year from despatch.
Predicted Protein Size:	42kDa/44kDa/50kDa/52kDa/55kDa
Gene Name:	aminopeptidase-like 1
Database Link:	Entrez Gene 79716 Human Q8NDH3
Background:	Probably catalyzes the removal of unsubstituted N-terminal amino acids from various peptides.
Synonyms:	bA261P9.2; FLJ11583; FLJ42065; KIAA1974



[View online »](#)

Product images:



Western blot analysis of extracts of various cell lines, using NPEPL1 antibody (TA379250) at 1:3000 dilution. | Secondary antibody: HRP Goat Anti-Rabbit IgG (H+L) at 1:10000 dilution. | Lysates/proteins: 25ug per lane. | Blocking buffer: 3% nonfat dry milk in TBST. | Detection: ECL Basic Kit . | Exposure time: 15s.