

Product datasheet for **TA379196**

CARD15 (NOD2) Rabbit Polyclonal Antibody

Product data:

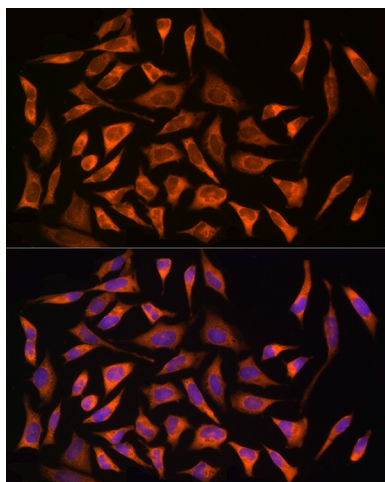
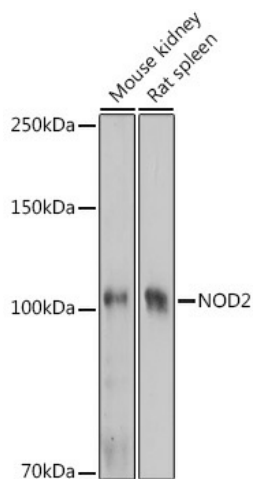
Product Type:	Primary Antibodies
Applications:	ICC/IF, IHC, WB
Recommended Dilution:	WB,1:500 - 1:2000 IHC,1:50 - 1:200 IF,1:50 - 1:200
Reactivity:	Human, Mouse, Rat
Host:	Rabbit
Isotype:	IgG
Clonality:	Polyclonal
Immunogen:	Recombinant fusion protein containing a sequence corresponding to amino acids 611-910 of human NOD2 (NP_071445.1).
Formulation:	Buffer: PBS with 0.02% sodium azide,50% glycerol,pH7.3.
Concentration:	lot specific
Purification:	Affinity purification
Conjugation:	Unconjugated
Storage:	Store at -20°C. Avoid freeze / thaw cycles.
Stability:	Shelf life: one year from despatch.
Predicted Protein Size:	22kDa/112kDa/115kDa
Gene Name:	nucleotide binding oligomerization domain containing 2
Database Link:	Entrez Gene 64127 Human Q9HC29
Background:	This gene is a member of the Nod1/Apaf-1 family and encodes a protein with two caspase recruitment (CARD) domains and six leucine-rich repeats (LRRs). The protein is primarily expressed in the peripheral blood leukocytes. It plays a role in the immune response to intracellular bacterial lipopolysaccharides (LPS) by recognizing the muramyl dipeptide (MDP) derived from them and activating the NFkB protein. Mutations in this gene have been associated with Crohn disease and Blau syndrome. Alternatively spliced transcript variants encoding distinct isoforms have been found for this gene.

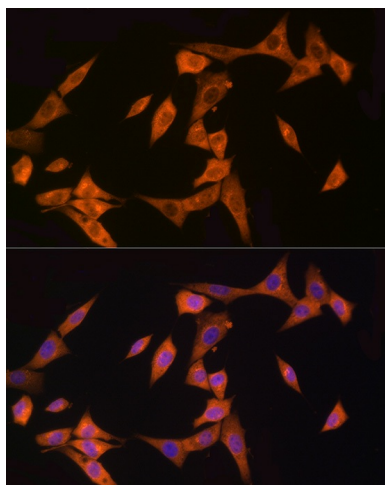


[View online »](#)

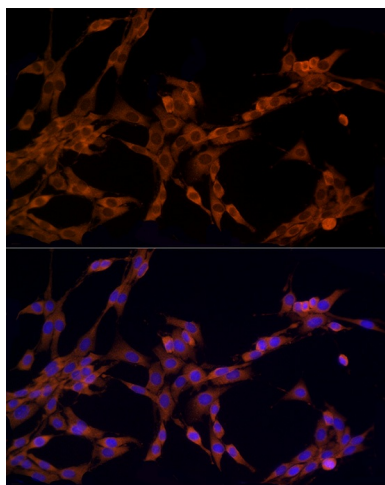
Synonyms: ACUG; BLAU; CARD15; CD; CLR16.3; IBD1; NLRC2; NOD2B; PSORAS1

Product images:





Immunofluorescence analysis of NIH/3T3 cells using NOD2 Rabbit pAb (TA379196) at dilution of 1:150 (40x lens). Blue: DAPI for nuclear staining.



Immunofluorescence analysis of PC-12 cells using NOD2 Rabbit pAb (TA379196) at dilution of 1:150 (40x lens). Blue: DAPI for nuclear staining.