

## Product datasheet for TA379173S

### NME2 (NME1-NME2) Rabbit Polyclonal Antibody

#### Product data:

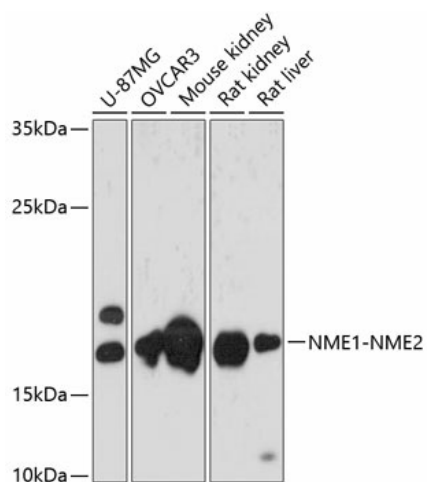
Product Type:	Primary Antibodies
Applications:	WB
Recommended Dilution:	WB,1:500 - 1:2000
Reactivity:	Human, Mouse, Rat
Modifications:	Unmodified
Host:	Rabbit
Isotype:	IgG
Clonality:	Polyclonal
Immunogen:	Recombinant fusion protein containing a sequence corresponding to amino acids 1-267 of human NME1-NME2 (NP_001018146.1).
Formulation:	Buffer: PBS with 0.02% sodium azide,50% glycerol,pH7.3.
Concentration:	lot specific
Purification:	Affinity purification
Conjugation:	Unconjugated
Storage:	Store at -20°C. Avoid freeze / thaw cycles.
Stability:	Shelf life: one year from despatch.
Predicted Protein Size:	22kDa
Gene Name:	NME1-NME2 readthrough
Database Link:	<a href="#">Entrez Gene 654364 Human P22392</a>

**Background:** This locus represents naturally occurring read-through transcription between the neighboring NME1 and NME2 genes. The significance of this read-through transcription and the function of the resulting protein product have not yet been determined. Alternative splicing of this gene results in multiple transcript variants.



[View online »](#)

## Product images:



Western blot analysis of extracts of various cell lines, using NME1-NME2 antibody ([TA379173]) at 1:3000 dilution. | Secondary antibody: HRP Goat Anti-Rabbit IgG (H+L) at 1:10000 dilution. | Lysates/proteins: 25ug per lane. | Blocking buffer: 3% nonfat dry milk in TBST. | Detection: ECL Basic Kit . | Exposure time: 30s.