

Product datasheet for **TA379171S**

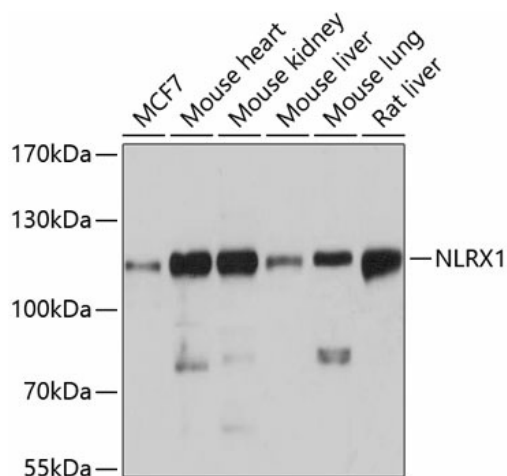
NLRX1 Rabbit Polyclonal Antibody

Product data:

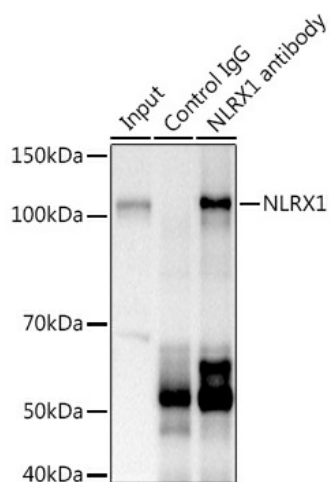
Product Type:	Primary Antibodies
Applications:	ELISA, IP, WB
Recommended Dilution:	WB, 1:500 - 1:2000 IP, 0.5µg-4µg antibody for 400µg-600µg extracts of whole cells ELISA, Recommended starting concentration is 1 µg/mL. Please optimize the concentration based on your specific assay requirements.
Reactivity:	Human, Mouse, Rat
Modifications:	Unmodified
Host:	Rabbit
Isotype:	IgG
Clonality:	Polyclonal
Formulation:	PBS with 0.05% proclin300, 50% glycerol, pH7.3.
Concentration:	lot specific
Purification:	Affinity purification
Conjugation:	Unconjugated
Storage:	Store at -20°C. Avoid freeze / thaw cycles.
Stability:	Shelf life: one year from despatch.
Predicted Protein Size:	108kDa
Gene Name:	NLR family member X1
Database Link:	Entrez Gene 79671 Human Q86UT6
Background:	The protein encoded by this gene is a member of the NLR family and localizes to the outer mitochondrial membrane. The encoded protein is a regulator of mitochondrial antiviral responses. Three transcript variants encoding the same protein have been found for this gene.
Synonyms:	CLR11.3; DLNB26; FLJ21478; MGC21025; MGC131937; NOD5; NOD9; NOD26; OTTHUMP00000205768; OTTHUMP00000205769



[View online »](#)

Product images:


Western blot analysis of lysates from Mouse heart



Immunoprecipitation analysis of 600 µg extracts of Mouse kidney using 3 µg NLRX1 antibody ([TA379171]). Western blot was performed from the immunoprecipitate using NLRX1 ([TA379171]) at a dilution of 1:1000.