

## Product datasheet for **TA379171**

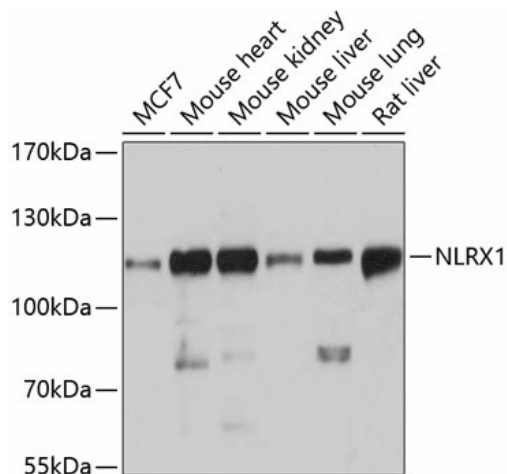
### **NLRX1 Rabbit Polyclonal Antibody**

#### **Product data:**

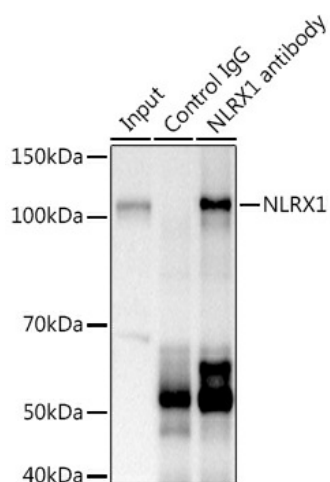
<b>Product Type:</b>	Primary Antibodies
<b>Applications:</b>	IP, WB
<b>Recommended Dilution:</b>	WB,1:500 - 1:2000 IP,1:50 - 1:200
<b>Reactivity:</b>	Human, Mouse, Rat
<b>Modifications:</b>	Unmodified
<b>Host:</b>	Rabbit
<b>Isotype:</b>	IgG
<b>Clonality:</b>	Polyclonal
<b>Immunogen:</b>	Recombinant fusion protein containing a sequence corresponding to amino acids 87-360 of human NLRX1 (NP_001269073.1).
<b>Formulation:</b>	Buffer: PBS with 0.02% sodium azide,50% glycerol,pH7.3.
<b>Concentration:</b>	lot specific
<b>Purification:</b>	Affinity purification
<b>Conjugation:</b>	Unconjugated
<b>Storage:</b>	Store at -20°C. Avoid freeze / thaw cycles.
<b>Stability:</b>	Shelf life: one year from despatch.
<b>Predicted Protein Size:</b>	101kDa/107kDa
<b>Gene Name:</b>	NLR family member X1
<b>Database Link:</b>	<a href="#">Entrez Gene 79671 Human Q86UT6</a>
<b>Background:</b>	The protein encoded by this gene is a member of the NLR family and localizes to the outer mitochondrial membrane. The encoded protein is a regulator of mitochondrial antivirus responses. Three transcript variants encoding the same protein have been found for this gene.
<b>Synonyms:</b>	CLR11.3; DLNB26; FLJ21478; MGC21025; MGC131937; NOD5; NOD9; NOD26; OTTHUMP00000205768; OTTHUMP00000205769



[View online »](#)

**Product images:**


Western blot analysis of extracts of various cell lines, using NLRX1 antibody (TA379171) at 1:3000 dilution. | Secondary antibody: HRP Goat Anti-Rabbit IgG (H+L) at 1:10000 dilution. | Lysates/proteins: 25ug per lane. | Blocking buffer: 3% nonfat dry milk in TBST. | Detection: ECL Basic Kit. | Exposure time: 10s.



Immunoprecipitation analysis of 600ug extracts of Mouse kidney using 3ug NLRX1 antibody (TA379171). Western blot was performed from the immunoprecipitate using NLRX1 (TA379171) at a dilution of 1:1000.