

## Product datasheet for **TA379168**

### NALP5 (NLRP5) Rabbit Polyclonal Antibody

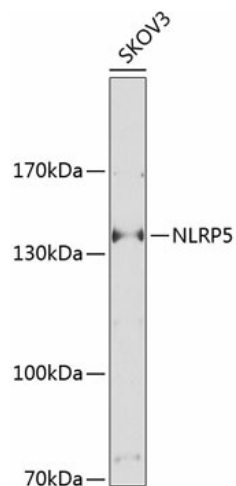
#### Product data:

Product Type:	Primary Antibodies
Applications:	WB
Recommended Dilution:	WB,1:500 - 1:2000
Reactivity:	Human, Mouse, Rat
Modifications:	Unmodified
Host:	Rabbit
Isotype:	IgG
Clonality:	Polyclonal
Immunogen:	Recombinant fusion protein containing a sequence corresponding to amino acids 157-256 of human NLRP5 (NP_703148.4).
Formulation:	Buffer: PBS with 0.02% sodium azide,50% glycerol,pH7.3.
Concentration:	lot specific
Purification:	Affinity purification
Conjugation:	Unconjugated
Storage:	Store at -20°C. Avoid freeze / thaw cycles.
Stability:	Shelf life: one year from despatch.
Predicted Protein Size:	134kDa
Gene Name:	NLR family, pyrin domain containing 5
Database Link:	<a href="#">Entrez Gene 126206 Human P59047</a>
Background:	The protein encoded by this gene belongs to the NALP protein family. Members of the NALP protein family typically contain a NACHT domain, a NACHT-associated domain (NAD), a C-terminal leucine-rich repeat (LRR) region, and an N-terminal pyrin domain (PYD). Expression of this gene is restricted to the oocyte. A mouse gene that encodes a maternal oocyte protein, similar to this encoded protein, is required for normal early embryogenesis.
Synonyms:	CLR19.8; MATER; NALP5; PAN11; PYPAF8



[View online »](#)

## Product images:



Western blot analysis of extracts of SKOV3 cells, using NLRP5 Antibody (TA379168) at 1:1000 dilution. | Secondary antibody: HRP Goat Anti-Rabbit IgG (H+L) at 1:10000 dilution. | Lysates/proteins: 25ug per lane. | Blocking buffer: 3% nonfat dry milk in TBST. | Detection: ECL Basic Kit . | Exposure time: 20S.