

Product datasheet for **TA379159**

NALP1 (NLRP1) Rabbit Polyclonal Antibody

Product data:

Product Type:	Primary Antibodies
Applications:	ICC/IF, IHC, WB
Recommended Dilution:	WB,1:500 - 1:2000 IHC,1:50 - 1:200 IF,1:50 - 1:200
Reactivity:	Human, Mouse, Rat
Host:	Rabbit
Isotype:	IgG
Clonality:	Polyclonal
Immunogen:	A synthetic peptide corresponding to a sequence within amino acids 1000-1100 of human NLRP1 (NP_001028225.1).
Formulation:	Buffer: PBS with 0.02% sodium azide,50% glycerol,pH7.3.
Concentration:	lot specific
Purification:	Affinity purification
Conjugation:	Unconjugated
Storage:	Store at -20°C. Avoid freeze / thaw cycles.
Stability:	Shelf life: one year from despatch.
Predicted Protein Size:	46kDa/83kDa/154-165kDa
Gene Name:	NLR family, pyrin domain containing 1
Database Link:	Entrez Gene 22861 Human Q9C000



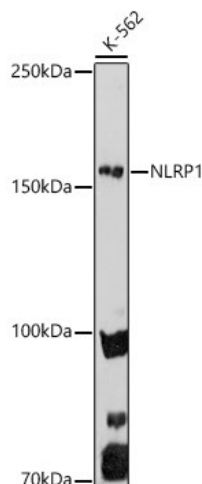
[View online »](#)

Background:

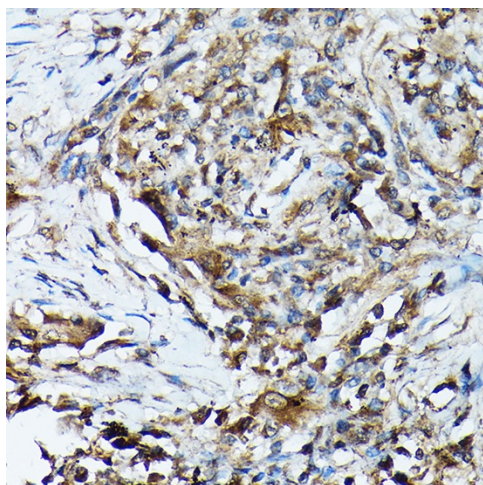
This gene encodes a member of the Ced-4 family of apoptosis proteins. Ced-family members contain a caspase recruitment domain (CARD) and are known to be key mediators of programmed cell death. The encoded protein contains a distinct N-terminal pyrin-like motif, which is possibly involved in protein-protein interactions. This protein interacts strongly with caspase 2 and weakly with caspase 9. Overexpression of this gene was demonstrated to induce apoptosis in cells. Multiple alternatively spliced transcript variants encoding distinct isoforms have been found for this gene, but the biological validity of some variants has not been determined.

Synonyms:

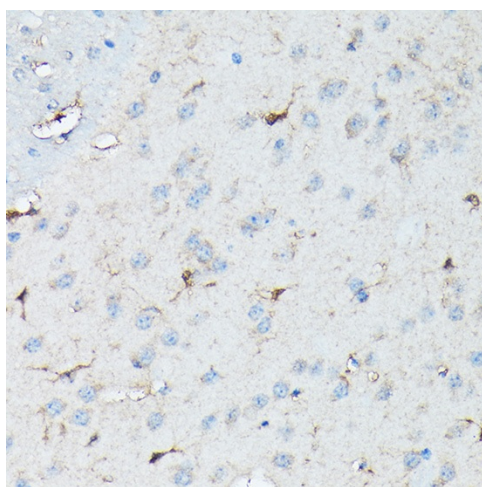
CARD7; CLR17.1; DEFCAP; DEFCAP-L/S; DKFZp586O1822; KIAA0926; NAC; NALP1; PP1044; SLEV1; VAMAS1

Product images:

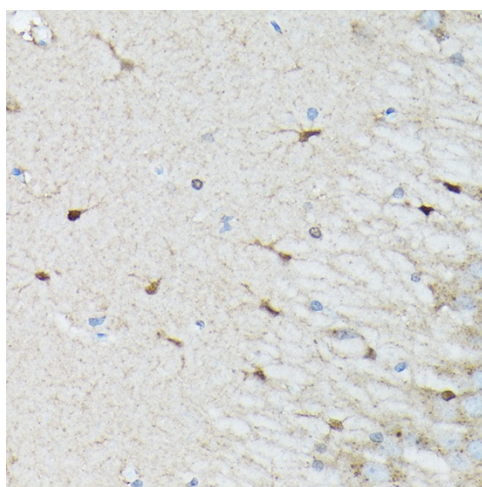
Western blot analysis of extracts of K-562 cells, using NLRP1 antibody (TA379159) at 1:1000 dilution. | Secondary antibody: HRP Goat Anti-Rabbit IgG (H+L) at 1:10000 dilution. | Lysates/proteins: 25ug per lane. | Blocking buffer: 3% nonfat dry milk in TBST. | Detection: ECL Enhanced Kit. | Exposure time: 180s.



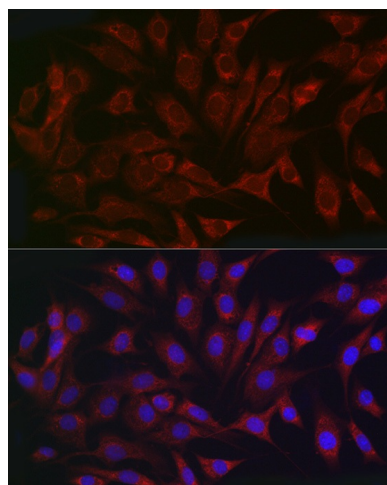
Immunohistochemistry of paraffin-embedded human lung cancer using NLRP1 Rabbit pAb (TA379159) at dilution of 1:100 (40x lens). Perform high pressure antigen retrieval with 10 mM citrate buffer pH 6.0 before commencing with IHC staining protocol.



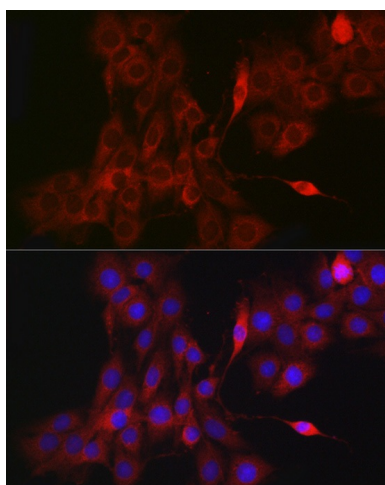
Immunohistochemistry of paraffin-embedded mouse brain using NLRP1 Rabbit pAb (TA379159) at dilution of 1:100 (40x lens). Perform high pressure antigen retrieval with 10 mM citrate buffer pH 6.0 before commencing with IHC staining protocol.



Immunohistochemistry of paraffin-embedded rat brain using NLRP1 Rabbit pAb (TA379159) at dilution of 1:100 (40x lens). Perform high pressure antigen retrieval with 10 mM citrate buffer pH 6.0 before commencing with IHC staining protocol.



Immunofluorescence analysis of NIH/3T3 cells using NLRP1 antibody (TA379159) at dilution of 1:200. Blue: DAPI for nuclear staining.



Immunofluorescence analysis of PC-12 cells using NLRP1 antibody (TA379159) at dilution of 1:200. Blue: DAPI for nuclear staining.