

Product datasheet for **TA379158S**

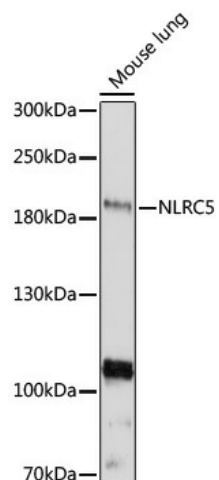
NLRC5 Rabbit Polyclonal Antibody

Product data:

Product Type:	Primary Antibodies
Applications:	ELISA, WB
Recommended Dilution:	WB, 1:500 - 1:2000 ELISA, Recommended starting concentration is 1 µg/mL. Please optimize the concentration based on your specific assay requirements.
Reactivity:	Mouse
Host:	Rabbit
Isotype:	IgG
Clonality:	Polyclonal
Formulation:	Buffer: PBS with 0.02% sodium azide, 50% glycerol, pH 7.3.
Concentration:	lot specific
Purification:	Affinity purification
Conjugation:	Unconjugated
Storage:	Store at -20°C. Avoid freeze / thaw cycles.
Stability:	Shelf life: one year from despatch.
Predicted Protein Size:	205kDa
Gene Name:	NLR family, CARD domain containing 5
Database Link:	Q86WI3
Background:	This gene encodes a member of the caspase recruitment domain-containing NLR family. This gene plays a role in cytokine response and antiviral immunity through its inhibition of NF-kappa-B activation and negative regulation of type I interferon signaling pathways.
Synonyms:	CLR16.1; FLJ21709; FLJ39711; NOD4; NOD27

[View online »](#)

Product images:



Western blot analysis of lysates from mouse lung