

## Product datasheet for **TA379156**

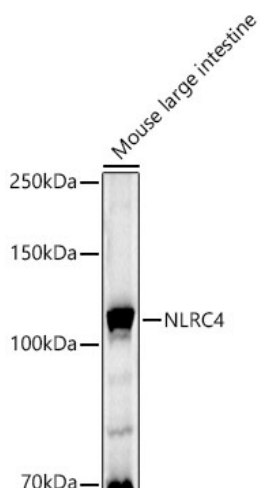
### **CARD12 (NLRC4) Rabbit Polyclonal Antibody**

#### **Product data:**

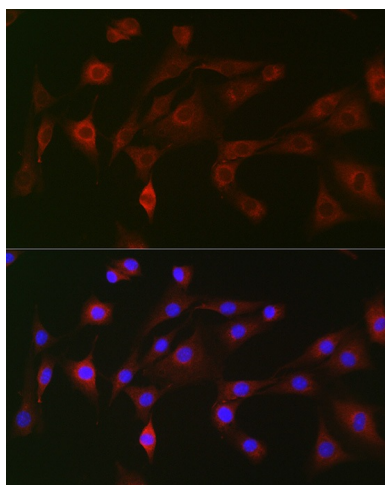
<b>Product Type:</b>	Primary Antibodies
<b>Applications:</b>	ICC/IF, WB
<b>Recommended Dilution:</b>	WB,1:500 - 1:2000 IF,1:50 - 1:200
<b>Reactivity:</b>	Human, Mouse, Rat
<b>Modifications:</b>	Unmodified
<b>Host:</b>	Rabbit
<b>Isotype:</b>	IgG
<b>Clonality:</b>	Polyclonal
<b>Immunogen:</b>	Recombinant fusion protein containing a sequence corresponding to amino acids 1-250 of human NLRC4 (NP_067032.3).
<b>Formulation:</b>	Buffer: PBS with 0.02% sodium azide,50% glycerol,pH7.3.
<b>Concentration:</b>	lot specific
<b>Purification:</b>	Affinity purification
<b>Conjugation:</b>	Unconjugated
<b>Storage:</b>	Store at -20°C. Avoid freeze / thaw cycles.
<b>Stability:</b>	Shelf life: one year from despatch.
<b>Predicted Protein Size:</b>	10kDa/18kDa/40kDa/116kDa
<b>Gene Name:</b>	NLR family, CARD domain containing 4
<b>Database Link:</b>	<a href="#">Entrez Gene 58484 Human Q9NPP4</a>
<b>Background:</b>	This gene encodes a member of the caspase recruitment domain-containing NLR family. Family members play essential roles in innate immune response to a wide range of pathogenic organisms, tissue damage and other cellular stresses. Mutations in this gene result in autoinflammation with infantile enterocolitis. Alternative splicing results in multiple transcript variants.
<b>Synonyms:</b>	CARD12; CLAN; CLAN1; CLANA; CLANB; CLANC; CLAND; CLR2.1; ipaf; OTTHUMP00000201170



[View online »](#)

**Product images:**

Western blot analysis of extracts of Mouse large intestine, using NLRC4 antibody (TA379156) at 1:1000 dilution. | Secondary antibody: HRP Goat Anti-Rabbit IgG (H+L) at 1:10000 dilution. | Lysates/proteins: 25ug per lane. | Blocking buffer: 3% nonfat dry milk in TBST. | Detection: ECL Basic Kit . | Exposure time: 180s.



Immunofluorescence analysis of NIH-3T3 cells using NLRC4 Rabbit pAb (TA379156) at dilution of 1:100 (40x lens). Blue: DAPI for nuclear staining.