

Product datasheet for **TA379147**

nkx6.1 (NKX6-1) Rabbit Polyclonal Antibody

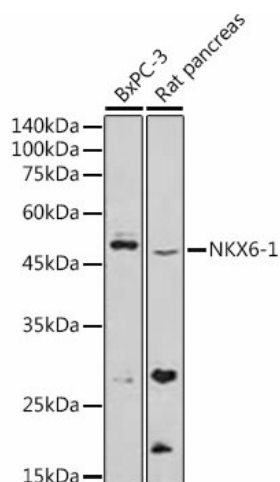
Product data:

Product Type:	Primary Antibodies
Applications:	IHC, WB
Recommended Dilution:	WB,1:500 - 1:2000 IHC,1:50 - 1:200
Reactivity:	Human, Mouse, Rat
Modifications:	Unmodified
Host:	Rabbit
Isotype:	IgG
Clonality:	Polyclonal
Immunogen:	Recombinant protein of human NKX6-1.
Formulation:	Buffer: PBS with 0.02% sodium azide,0.05% BSA,50% glycerol,pH7.3.
Concentration:	lot specific
Purification:	Affinity purification
Conjugation:	Unconjugated
Storage:	Store at -20°C. Avoid freeze / thaw cycles. Avoid freeze / thaw cycles. Buffer: PBS with 0.02% sodium azide,0.05% BSA,50% glycerol,pH7.3.
Stability:	Shelf life: one year from despatch.
Predicted Protein Size:	37kDa
Gene Name:	NK6 homeobox 1
Database Link:	Entrez Gene 4825 Human P78426
Background:	In the pancreas, NKX6.1 is required for the development of beta cells and is a potent bifunctional transcription regulator that binds to AT-rich sequences within the promoter region of target genes lype et al.



[View online »](#)

Product images:



Western blot analysis of extracts of various cell lines, using NKX6-1 antibody (TA379147) at 1:500 dilution. | Secondary antibody: HRP Goat Anti-Rabbit IgG (H+L) at 1:10000 dilution. | Lysates/proteins: 25ug per lane. | Blocking buffer: 3% nonfat dry milk in TBST. | Detection: ECL Basic Kit . | Exposure time: 90s.