

Product datasheet for **TA379133S**

NINL Rabbit Polyclonal Antibody

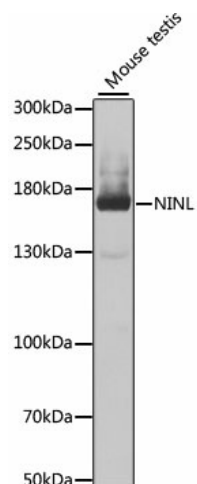
Product data:

Product Type:	Primary Antibodies
Applications:	ELISA, WB
Recommended Dilution:	WB, 1:500 - 1:2000 ELISA, Recommended starting concentration is 1 µg/mL. Please optimize the concentration based on your specific assay requirements.
Reactivity:	Mouse
Modifications:	Unmodified
Host:	Rabbit
Isotype:	IgG
Clonality:	Polyclonal
Formulation:	Buffer: PBS with 0.02% sodium azide, 50% glycerol, pH 7.3.
Concentration:	lot specific
Purification:	Affinity purification
Conjugation:	Unconjugated
Storage:	Store at -20°C. Avoid freeze / thaw cycles.
Stability:	Shelf life: one year from despatch.
Predicted Protein Size:	156kDa
Gene Name:	ninein like
Database Link:	Q9Y2I6
Background:	Predicted to enable calcium ion binding activity. Predicted to be involved in microtubule anchoring at centrosome. Located in cytosol; intercellular bridge; and microtubule cytoskeleton.
Synonyms:	dj691N24.1; FLJ11792; KIAA0980; ninein-like; NLP



[View online »](#)

Product images:



Western blot analysis of lysates from mouse testis