

## Product datasheet for **TA379100**

### **IKB alpha (NFKBIA) Rabbit Polyclonal Antibody**

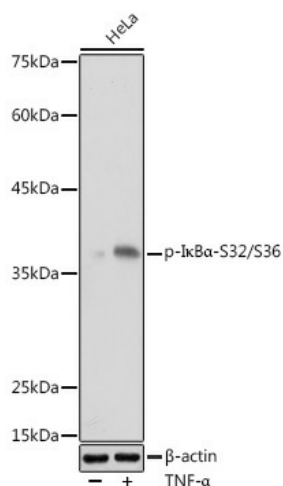
#### **Product data:**

<b>Product Type:</b>	Primary Antibodies
<b>Applications:</b>	WB
<b>Recommended Dilution:</b>	WB,1:500 - 1:2000
<b>Reactivity:</b>	Human
<b>Modifications:</b>	Phospho S32/S36
<b>Host:</b>	Rabbit
<b>Isotype:</b>	IgG
<b>Clonality:</b>	Polyclonal
<b>Immunogen:</b>	A synthetic phosphorylated peptide around S32/S36 of human IκBα.
<b>Formulation:</b>	Buffer: PBS with 0.02% sodium azide,50% glycerol,pH7.3.
<b>Concentration:</b>	lot specific
<b>Purification:</b>	Affinity purification
<b>Conjugation:</b>	Unconjugated
<b>Storage:</b>	Store at -20°C. Avoid freeze / thaw cycles.
<b>Stability:</b>	Shelf life: one year from despatch.
<b>Predicted Protein Size:</b>	35kDa
<b>Gene Name:</b>	NFKB inhibitor alpha
<b>Database Link:</b>	<a href="#">Entrez Gene 4792 Human P25963</a>
<b>Background:</b>	This gene encodes a member of the NF-kappa-B inhibitor family, which contain multiple ankrin repeat domains. The encoded protein interacts with REL dimers to inhibit NF-kappa-B/REL complexes which are involved in inflammatory responses. The encoded protein moves between the cytoplasm and the nucleus via a nuclear localization signal and CRM1-mediated nuclear export. Mutations in this gene have been found in ectodermal dysplasia anhidrotic with T-cell immunodeficiency autosomal dominant disease.
<b>Synonyms:</b>	I-kappa-B-alpha; IκappaBalpa; IκB-alpha; IKBA; MAD-3; MAD3; NFKBI



[View online »](#)

## Product images:



Western blot analysis of extracts of HeLa cells, using Phospho-I $\kappa$ B $\alpha$ -S32/S36 pAb antibody (TA379100) at 1:500 dilution. HeLa cells were treated by TNF- $\alpha$  (20 ng/ml) at 37°C for 30 minutes. | Secondary antibody: HRP Goat Anti-Rabbit IgG (H+L) at 1:10000 dilution. | Lysates/proteins: 25ug per lane. | Blocking buffer: 3% nonfat dry milk in TBST. | Detection: ECL Basic Kit. | Exposure time: 180s.