

## Product datasheet for **TA379094**

### **IKB alpha (NFKBIA) Rabbit Polyclonal Antibody**

#### **Product data:**

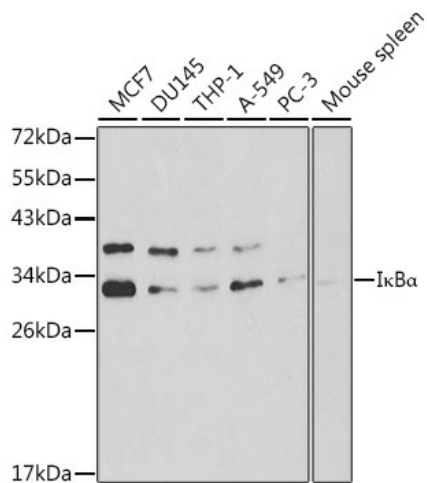
<b>Product Type:</b>	Primary Antibodies
<b>Applications:</b>	ICC/IF, IHC, WB
<b>Recommended Dilution:</b>	WB,1:500 - 1:2000 IF,1:20 - 1:100
<b>Reactivity:</b>	Human, Mouse
<b>Modifications:</b>	Unmodified
<b>Host:</b>	Rabbit
<b>Isotype:</b>	IgG
<b>Clonality:</b>	Polyclonal
<b>Immunogen:</b>	Recombinant fusion protein containing a sequence corresponding to amino acids 1-317 of human I $\kappa$ B $\alpha$ (NP_065390.1).
<b>Formulation:</b>	Buffer: PBS with 0.02% sodium azide,50% glycerol,pH7.3.
<b>Concentration:</b>	lot specific
<b>Purification:</b>	Affinity purification
<b>Conjugation:</b>	Unconjugated
<b>Storage:</b>	Store at -20°C. Avoid freeze / thaw cycles.
<b>Stability:</b>	Shelf life: one year from despatch.
<b>Predicted Protein Size:</b>	35kDa
<b>Gene Name:</b>	NFKB inhibitor alpha
<b>Database Link:</b>	<a href="#">Entrez Gene 4792 Human P25963</a>
<b>Background:</b>	This gene encodes a member of the NF-kappa-B inhibitor family, which contain multiple ankrin repeat domains. The encoded protein interacts with REL dimers to inhibit NF-kappa-B/REL complexes which are involved in inflammatory responses. The encoded protein moves between the cytoplasm and the nucleus via a nuclear localization signal and CRM1-mediated nuclear export. Mutations in this gene have been found in ectodermal dysplasia anhidrotic with T-cell immunodeficiency autosomal dominant disease.



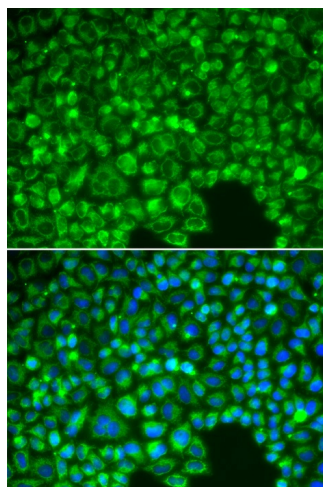
[View online »](#)

Synonyms: I-kappa-B-alpha; IkappaBalpha; IκB-alpha; IKBA; MAD-3; MAD3; NFKBI

**Product images:**



Western blot analysis of extracts of various cell lines, using IκBα antibody (TA379094) at 1:1000 dilution. | Secondary antibody: HRP Goat Anti-Rabbit IgG (H+L) at 1:10000 dilution. | Lysates/proteins: 25ug per lane. | Blocking buffer: 3% nonfat dry milk in TBST.



Immunofluorescence analysis of HeLa cells using IκBα antibody (TA379094). Blue: DAPI for nuclear staining.