

Product datasheet for **TA379063S**

NEURL1B Rabbit Polyclonal Antibody

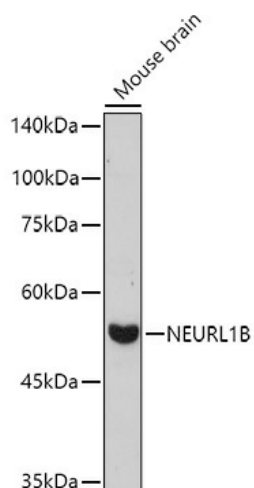
Product data:

Product Type:	Primary Antibodies
Applications:	ELISA, IHC, WB
Recommended Dilution:	WB, 1:500 - 1:1000 IHC-P, 1:50 - 1:200 ELISA, Recommended starting concentration is 1 µg/mL. Please optimize the concentration based on your specific assay requirements.
Reactivity:	Human, Mouse, Rat
Modifications:	Unmodified
Host:	Rabbit
Isotype:	IgG
Clonality:	Polyclonal
Formulation:	Buffer: PBS with 0.02% sodium azide, 50% glycerol, pH 7.3.
Concentration:	lot specific
Purification:	Affinity purification
Conjugation:	Unconjugated
Storage:	Store at -20°C. Avoid freeze / thaw cycles.
Stability:	Shelf life: one year from despatch.
Predicted Protein Size:	59kDa
Gene Name:	neuralized E3 ubiquitin protein ligase 1B
Database Link:	Entrez Gene 54492 Human A8MQ27
Background:	Predicted to enable ubiquitin protein ligase activity. Predicted to be involved in ubiquitin-dependent endocytosis. Located in actin cytoskeleton and cytosol.
Synonyms:	DKFZP761M1511; hNeur2; neur2; neuralized-2; NEURL3

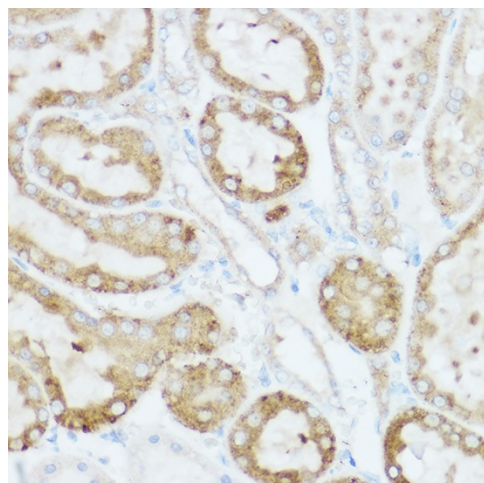


[View online »](#)

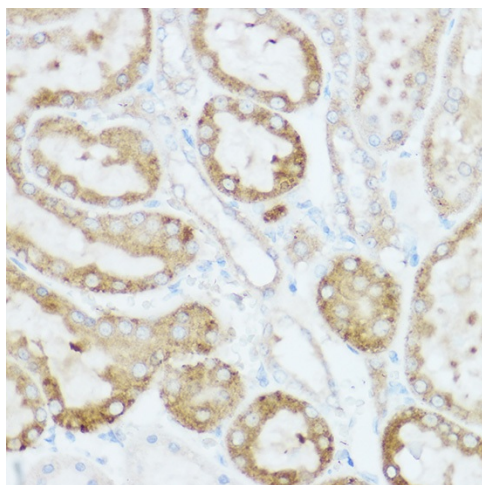
Product images:



Western blot analysis of lysates from Mouse brain



Immunohistochemistry analysis of paraffin-embedded Mouse spinal cord using NEURL1B Rabbit pAb ([TA379063]) at dilution of 1:100 (40x lens). High pressure antigen retrieval performed with 0.01M Citrate Bufferr (pH 6.0) prior to IHC staining.



Immunohistochemistry analysis of paraffin-embedded Rat kidney using NEURL1B Rabbit pAb ([TA379063]) at dilution of 1:100 (40x lens). High pressure antigen retrieval performed with 0.01M Citrate Bufferr (pH 6.0) prior to IHC staining.