

Product datasheet for **TA379051**

COBRA1 (NELFB) Rabbit Polyclonal Antibody

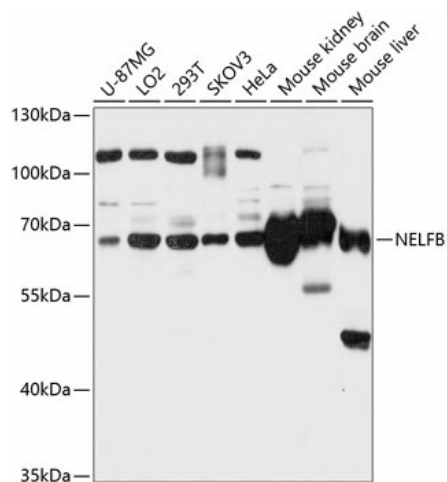
Product data:

Product Type:	Primary Antibodies
Applications:	WB
Recommended Dilution:	WB,1:500 - 1:2000
Reactivity:	Human, Mouse
Modifications:	Unmodified
Host:	Rabbit
Isotype:	IgG
Clonality:	Polyclonal
Immunogen:	Recombinant fusion protein containing a sequence corresponding to amino acids 349-628 of human NELFB (NP_056271.3).
Formulation:	Buffer: PBS with 0.02% sodium azide,50% glycerol,pH7.3.
Concentration:	lot specific
Purification:	Affinity purification
Conjugation:	Unconjugated
Storage:	Store at -20°C. Avoid freeze / thaw cycles.
Stability:	Shelf life: one year from despatch.
Predicted Protein Size:	65kDa
Gene Name:	negative elongation factor complex member B
Database Link:	Entrez Gene 25920 Human Q8WX92
Background:	NELFB is a subunit of negative elongation factor (NELF), which also includes NELFA (WHSC2; MIM 606026), either NELFC or NELFD (TH1L; MIM 605297), and NELFE (RDBP; MIM 154040). NELF acts with DRB sensitivity-inducing factor (DSIF), a heterodimer of SPT4 (SUPT4H1; MIM 603555) and SPT5 (SUPT5H; MIM 602102), to cause transcriptional pausing of RNA polymerase II (see MIM 180660) (Narita et al., 2003 [PubMed 12612062]).
Synonyms:	A730008L03Rik; AB041607; A1663983; Cobra1; Nelf-b; RGD1307832; RP23-132N23.4



[View online »](#)

Product images:



Western blot analysis of extracts of various cell lines, using NELFB antibody (TA379051) at 1:3000 dilution. | Secondary antibody: HRP Goat Anti-Rabbit IgG (H+L) at 1:10000 dilution. | Lysates/proteins: 25ug per lane. | Blocking buffer: 3% nonfat dry milk in TBST. | Detection: ECL Basic Kit . | Exposure time: 5s.