

## Product datasheet for **TA379041**

### Neurofilament (NEFL) Rabbit Polyclonal Antibody

#### Product data:

Product Type:	Primary Antibodies
Applications:	ICC/IF, IHC, WB
Recommended Dilution:	WB,1:500 - 1:2000 IHC,1:50 - 1:200 IF,1:50 - 1:200
Reactivity:	Human, Mouse, Rat
Modifications:	Unmodified
Host:	Rabbit
Isotype:	IgG
Clonality:	Polyclonal
Immunogen:	Recombinant fusion protein containing a sequence corresponding to amino acids 400-543 of human Neurofilament L (NP_006149.2).
Formulation:	PBS with 0.09% Sodium azide,50% glycerol,pH7.3.
Concentration:	lot specific
Purification:	Affinity purification
Conjugation:	Unconjugated
Storage:	Store at -20°C. Avoid freeze / thaw cycles.
Stability:	Shelf life: one year from despatch.
Predicted Protein Size:	61kDa
Gene Name:	neurofilament, light polypeptide
Database Link:	<a href="#">Entrez Gene 4747 Human P07196</a>



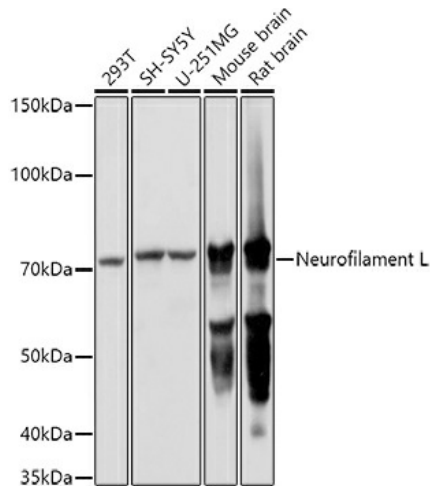
[View online »](#)

**Background:**

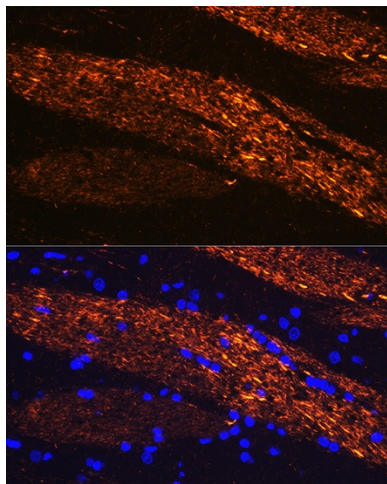
Neurofilaments are type IV intermediate filament heteropolymers composed of light, medium, and heavy chains. Neurofilaments comprise the axoskeleton and they functionally maintain the neuronal caliber. They may also play a role in intracellular transport to axons and dendrites. This gene encodes the light chain neurofilament protein. Mutations in this gene cause Charcot-Marie-Tooth disease types 1F (CMT1F) and 2E (CMT2E), disorders of the peripheral nervous system that are characterized by distinct neuropathies. A pseudogene has been identified on chromosome Y.

**Synonyms:**

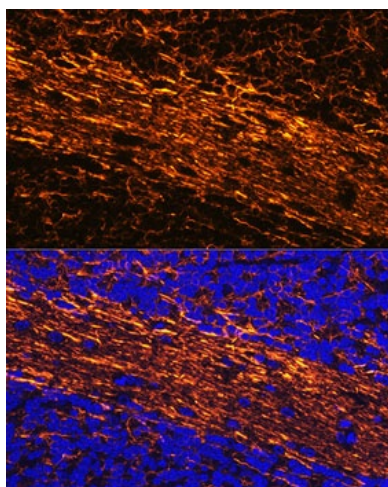
CMT1F; CMT2E; FLJ53642; neurofilament-light; NF-L; NF68; NFL

**Product images:**


Western blot analysis of extracts of various cell lines, using Neurofilament L antibody (TA379041) at 1:1000 dilution. | Secondary antibody: HRP Goat Anti-Rabbit IgG (H+L) at 1:10000 dilution. | Lysates/proteins: 25ug per lane. | Blocking buffer: 3% nonfat dry milk in TBST. | Detection: ECL Basic Kit. | Exposure time: 1s.



Immunofluorescence analysis of rat brain using Neurofilament L Rabbit pAb (TA379041) at dilution of 1:100 (40x lens). Blue: DAPI for nuclear staining.



Immunofluorescence analysis of mouse brain using Neurofilament L Rabbit pAb (TA379041) at dilution of 1:100 (40x lens). Blue: DAPI for nuclear staining.