

Product datasheet for **TA379037**

NEDD8 Rabbit Polyclonal Antibody

Product data:

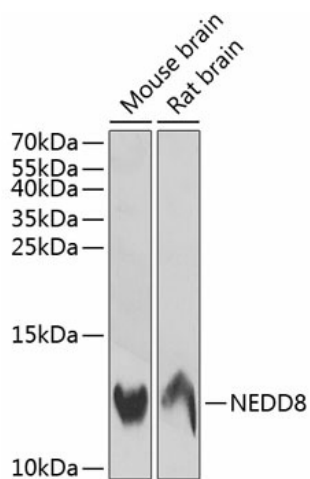
Product Type:	Primary Antibodies
Applications:	WB
Recommended Dilution:	WB,1:500 - 1:2000
Reactivity:	Mouse, Rat
Modifications:	Unmodified
Host:	Rabbit
Isotype:	IgG
Clonality:	Polyclonal
Immunogen:	Recombinant fusion protein containing a sequence corresponding to amino acids 1-81 of human NEDD8 (NP_006147.1).
Formulation:	Buffer: PBS with 0.02% sodium azide,50% glycerol,pH7.3.
Concentration:	lot specific
Purification:	Affinity purification
Conjugation:	Unconjugated
Storage:	Store at -20°C. Avoid freeze / thaw cycles.
Stability:	Shelf life: one year from despatch.
Predicted Protein Size:	9kDa
Gene Name:	neural precursor cell expressed, developmentally down-regulated 8
Database Link:	Q15843
Background:	Neural Precursor Cell Expressed Developmentally Downregulated Gene 8 (NEDD8), also known as Related to Ubiquitin 1 (Rub1), is a 6-8 kDa member of the Ubiquitin family of proteins. Human NEDD8 is activated by a distinct NEDD8-activating (E1) enzyme, a heterodimeric complex composed of APPBP1 and UBA3 subunits . Activated NEDD8 is subsequently transferred to the UBE2M/Ubc12 or UBE2F NEDD8-conjugating (E2) enzymes . Through a process termed neddylation, the ROC1/Rbx1 RING Finger E3 ligase transfers NEDD8 to specific substrates. NEDD8 plays a critical regulatory role in cell proliferation and dysregulation of the NEDD8 pathway has been associated with several cancer pathologies .



[View online »](#)

Synonyms: APPBP1; FLJ43224; MGC104393; MGC125896; MGC125897; NAE1; Nedd-8; Neddylin

Product images:



Western blot analysis of extracts of various cell lines, using NEDD8 antibody (TA379037) at 1:1000 dilution. | Secondary antibody: HRP Goat Anti-Rabbit IgG (H+L) at 1:10000 dilution. | Lysates/proteins: 25ug per lane. | Blocking buffer: 3% nonfat dry milk in TBST. | Detection: ECL Enhanced Kit. | Exposure time: 60s.