

Product datasheet for **TA379033**

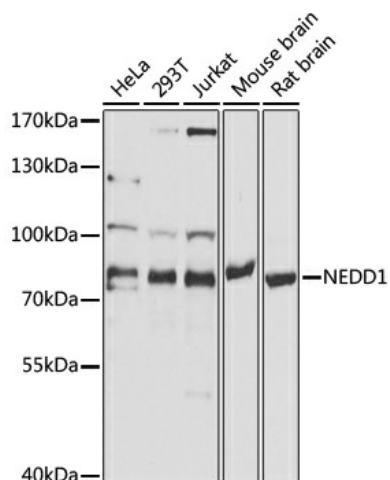
NEDD1 Rabbit Polyclonal Antibody

Product data:

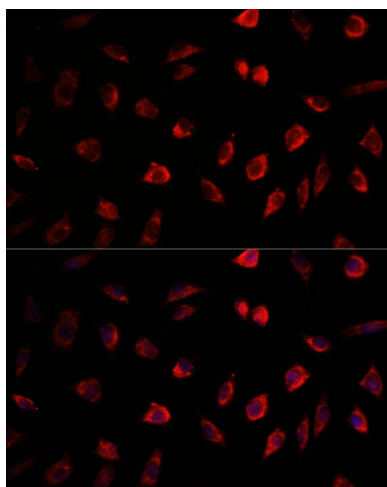
Product Type:	Primary Antibodies
Applications:	ICC/IF, WB
Recommended Dilution:	WB,1:500 - 1:2000 IF,1:50 - 1:200
Reactivity:	Human, Mouse, Rat
Modifications:	Unmodified
Host:	Rabbit
Isotype:	IgG
Clonality:	Polyclonal
Immunogen:	Recombinant fusion protein containing a sequence corresponding to amino acids 411-660 of human NEDD1 (NP_690869.1).
Formulation:	Buffer: PBS with 0.02% sodium azide,50% glycerol,pH7.3.
Concentration:	lot specific
Purification:	Affinity purification
Conjugation:	Unconjugated
Storage:	Store at -20°C. Avoid freeze / thaw cycles.
Stability:	Shelf life: one year from despatch.
Predicted Protein Size:	62kDa/71kDa/72kDa
Gene Name:	neural precursor cell expressed, developmentally down-regulated 1
Database Link:	Entrez Gene 121441 Human Q8NHV4
Background:	Required for mitosis progression. Promotes the nucleation of microtubules from the spindle.
Synonyms:	FLJ35902; GCP-WD; NEDD-1; TUBGCP7



[View online »](#)

Product images:

Western blot analysis of extracts of various cell lines, using NEDD1 antibody (TA379033) at 1:1000 dilution. | Secondary antibody: HRP Goat Anti-Rabbit IgG (H+L) at 1:10000 dilution. | Lysates/proteins: 25ug per lane. | Blocking buffer: 3% nonfat dry milk in TBST. | Detection: ECL Basic Kit. | Exposure time: 30s.



Immunofluorescence analysis of L929 cells using NEDD1 antibody (TA379033) at dilution of 1:100. Blue: DAPI for nuclear staining.