

## Product datasheet for **TA379028S**

### NECAB1 Rabbit Polyclonal Antibody

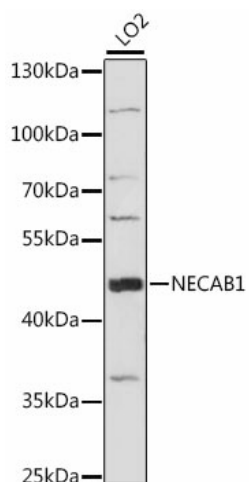
#### Product data:

Product Type:	Primary Antibodies
Applications:	ELISA, WB
Recommended Dilution:	WB, 1:500 - 1:2000 ELISA, Recommended starting concentration is 1 µg/mL. Please optimize the concentration based on your specific assay requirements.
Reactivity:	Human, Mouse, Rat
Modifications:	Unmodified
Host:	Rabbit
Isotype:	IgG
Clonality:	Polyclonal
Formulation:	Buffer: PBS with 0.02% sodium azide, 50% glycerol, pH 7.3.
Concentration:	lot specific
Purification:	Affinity purification
Conjugation:	Unconjugated
Storage:	Store at -20°C. Avoid freeze / thaw cycles.
Stability:	Shelf life: one year from despatch.
Predicted Protein Size:	41kDa
Gene Name:	N-terminal EF-hand calcium binding protein 1
Database Link:	<a href="#">Entrez Gene 64168 Human Q8N987</a>
Background:	Enables identical protein binding activity. Predicted to be involved in regulation of amyloid precursor protein biosynthetic process. Predicted to act upstream of or within blastocyst hatching. Located in cytosol and nucleoplasm.
Synonyms:	EFCBP1; STIP-1



[View online »](#)

## Product images:



Western blot analysis of lysates from LO2 cells