

Product datasheet for **TA379016**

NDUFB8 Rabbit Polyclonal Antibody

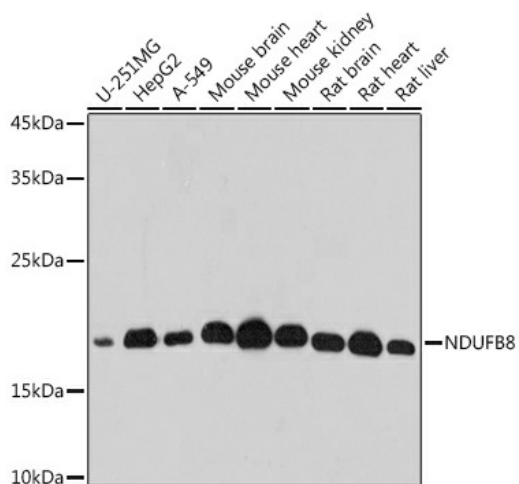
Product data:

Product Type:	Primary Antibodies
Applications:	ICC/IF, IHC, WB
Recommended Dilution:	WB,1:500 - 1:2000 IHC,1:50 - 1:200 IF,1:50 - 1:200
Reactivity:	Human, Mouse, Rat
Modifications:	Unmodified
Host:	Rabbit
Isotype:	IgG
Clonality:	Polyclonal
Immunogen:	Recombinant protein of human NDUFB8.
Formulation:	Buffer: PBS with 0.02% sodium azide,0.05% BSA,50% glycerol,pH7.3.
Concentration:	lot specific
Purification:	Affinity purification
Conjugation:	Unconjugated
Storage:	Store at -20°C. Avoid freeze / thaw cycles. Avoid freeze / thaw cycles. Buffer: PBS with 0.02% sodium azide,0.05% BSA,50% glycerol,pH7.3.
Stability:	Shelf life: one year from despatch.
Predicted Protein Size:	19kDa
Gene Name:	NADH:ubiquinone oxidoreductase subunit B8
Database Link:	Entrez Gene 4714 Human O95169
Background:	Accessory subunit of the mitochondrial membrane respiratory chain NADH dehydrogenase (Complex I, that is believed not to be involved in catalysis. Complex I functions in the transfer of electrons from NADH to the respiratory chain. The immediate electron acceptor for the enzyme is believed to be ubiquinone.
Synonyms:	ASHI; CI-ASHI



[View online »](#)

Product images:



Western blot analysis of extracts of various cell lines, using NDUFB8 antibody (TA379016) at 1:500 dilution. | Secondary antibody: HRP Goat Anti-Rabbit IgG (H+L) at 1:10000 dilution. | Lysates/proteins: 25ug per lane. | Blocking buffer: 3% nonfat dry milk in TBST. | Detection: ECL Basic Kit. | Exposure time: 10s.