

Product datasheet for **TA379008S**

NDUFB10 Rabbit Polyclonal Antibody

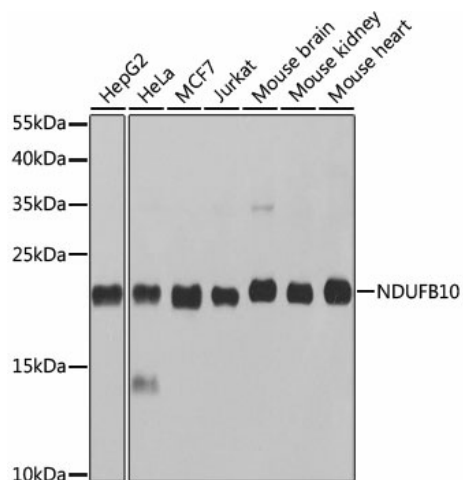
Product data:

Product Type:	Primary Antibodies
Applications:	ELISA, IP, WB
Recommended Dilution:	WB, 1:500 - 1:2000 IP, 0.5µg-4µg antibody for 200µg-400µg extracts of whole cells ELISA, Recommended starting concentration is 1 µg/mL. Please optimize the concentration based on your specific assay requirements.
Reactivity:	Human, Mouse, Rat
Modifications:	Unmodified
Host:	Rabbit
Isotype:	IgG
Clonality:	Polyclonal
Formulation:	Buffer: PBS with 0.02% sodium azide, 50% glycerol, pH 7.3.
Concentration:	lot specific
Purification:	Affinity purification
Conjugation:	Unconjugated
Storage:	Store at -20°C. Avoid freeze / thaw cycles.
Stability:	Shelf life: one year from despatch.
Predicted Protein Size:	21kDa
Gene Name:	NADH:ubiquinone oxidoreductase subunit B10
Database Link:	Entrez Gene 4716 Human O96000
Background:	Involved in mitochondrial respiratory chain complex I assembly. Located in mitochondrial inner membrane. Part of mitochondrial respiratory chain complex I. Implicated in nuclear type mitochondrial complex I deficiency 35.
Synonyms:	CI-PDSW; PDSW



[View online »](#)

Product images:



Western blot analysis of various lysates using NDUFB10 Rabbit pAb (TA379008) at 1:1000 dilution.

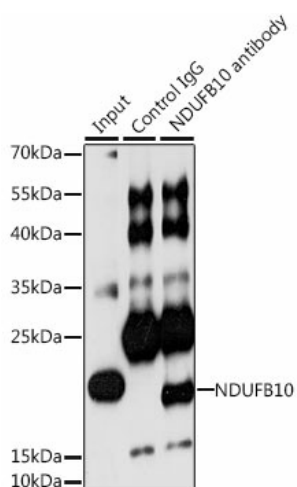
Secondary antibody: HRP-conjugated Goat anti-Rabbit IgG (H+L) (AS014) at 1:10000 dilution.

Lysates/proteins: 25µg per lane.

Blocking buffer: 3% nonfat dry milk in TBST.

Detection: ECL Basic Kit (RM00020).

Exposure time: 10s.



Immunoprecipitation analysis of 200 µg extracts of HeLa cells