

Product datasheet for **TA379007S**

NDUFB1 Rabbit Polyclonal Antibody

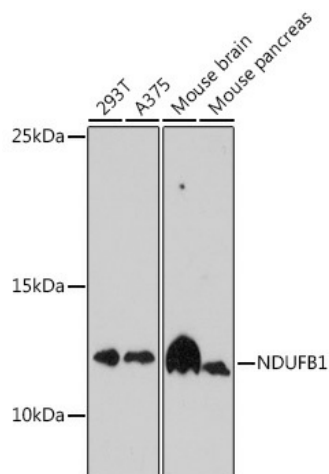
Product data:

Product Type:	Primary Antibodies
Applications:	ELISA, ICC/IF, WB
Recommended Dilution:	WB, 1:500 - 1:2000 IF/ICC, 1:50 - 1:100 ELISA, Recommended starting concentration is 1 µg/mL. Please optimize the concentration based on your specific assay requirements.
Reactivity:	Human, Mouse
Host:	Rabbit
Isotype:	IgG
Clonality:	Polyclonal
Formulation:	Buffer: PBS with 0.02% sodium azide, 50% glycerol, pH7.3.
Concentration:	lot specific
Purification:	Affinity purification
Conjugation:	Unconjugated
Storage:	Store at -20°C. Avoid freeze / thaw cycles.
Stability:	Shelf life: one year from despatch.
Predicted Protein Size:	7kDa
Gene Name:	NADH:ubiquinone oxidoreductase subunit B1
Database Link:	Entrez Gene 4707 Human O75438
Background:	Involved in mitochondrial respiratory chain complex I assembly. Located in mitochondrion and nuclear speck. Part of mitochondrial respiratory chain complex I.
Synonyms:	CI-MNLL; CI-SGDH; MNLL



[View online »](#)

Product images:



Western blot analysis of various lysates using NDUFB1 Rabbit pAb ([TA379007]) at 1:1000 dilution.

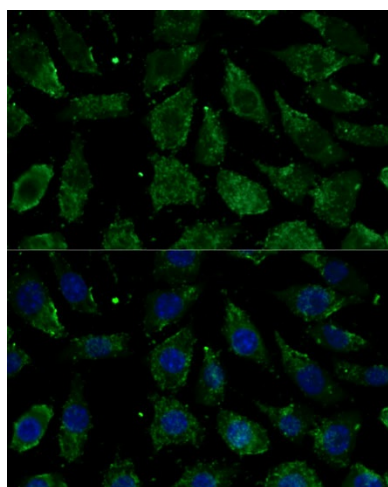
Secondary antibody: HRP-conjugated Goat anti-Rabbit IgG (H+L) (AS014) at 1:10000 dilution.

Lysates/proteins: 25µg per lane.

Blocking buffer: 3% nonfat dry milk in TBST.

Detection: ECL Basic Kit (RM00020).

Exposure time: 90s.



Immunofluorescence analysis of L929 cells using NDUFB1 Rabbit pAb ([TA379007]) at dilution of 1:100. Secondary antibody: Cy3-conjugated Goat anti-Rabbit IgG (H+L) (AS007) at 1:500 dilution.

Blue: DAPI for nuclear staining.