

## Product datasheet for **TA379007**

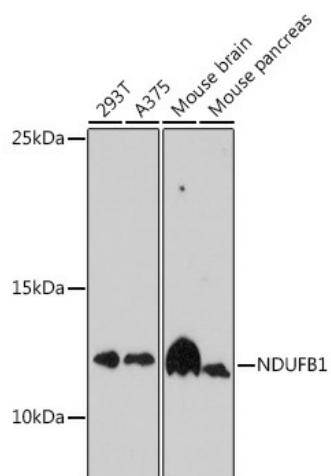
### NDUFB1 Rabbit Polyclonal Antibody

#### Product data:

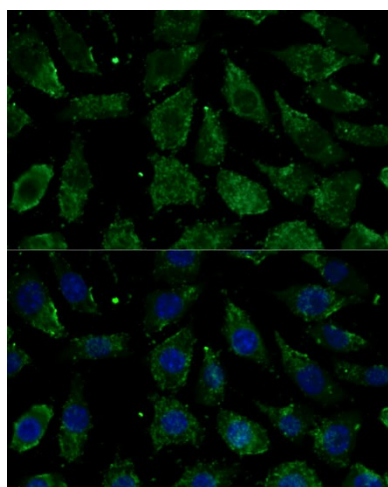
Product Type:	Primary Antibodies
Applications:	ICC/IF, WB
Recommended Dilution:	WB,1:500 - 1:2000 IF,1:50 - 1:100
Reactivity:	Human, Mouse
Host:	Rabbit
Isotype:	IgG
Clonality:	Polyclonal
Immunogen:	Recombinant fusion protein containing a sequence corresponding to amino acids 1-105 of human NDUFB1 (NP_004536.2).
Formulation:	Buffer: PBS with 0.02% sodium azide,50% glycerol,pH7.3.
Concentration:	lot specific
Purification:	Affinity purification
Conjugation:	Unconjugated
Storage:	Store at -20°C. Avoid freeze / thaw cycles.
Stability:	Shelf life: one year from despatch.
Predicted Protein Size:	6kDa/11kDa
Gene Name:	NADH:ubiquinone oxidoreductase subunit B1
Database Link:	<a href="#">Entrez Gene 4707 Human O75438</a>
Background:	Accessory subunit of the mitochondrial membrane respiratory chain NADH dehydrogenase (Complex I that is believed not to be involved in catalysis. Complex I functions in the transfer of electrons from NADH to the respiratory chain. The immediate electron acceptor for the enzyme is believed to be ubiquinone.
Synonyms:	CI-MNLL; CI-SGDH; MNLL



[View online »](#)

**Product images:**

Western blot analysis of extracts of various cell lines, using NDUFB1 antibody (TA379007) at 1:1000 dilution. | Secondary antibody: HRP Goat Anti-Rabbit IgG (H+L) at 1:10000 dilution. | Lysates/proteins: 25ug per lane. | Blocking buffer: 3% nonfat dry milk in TBST. | Detection: ECL Basic Kit . | Exposure time: 90s.



Immunofluorescence analysis of L929 cells using NDUFB1 antibody (TA379007) at dilution of 1:100. Blue: DAPI for nuclear staining.