

Product datasheet for **TA378998S**

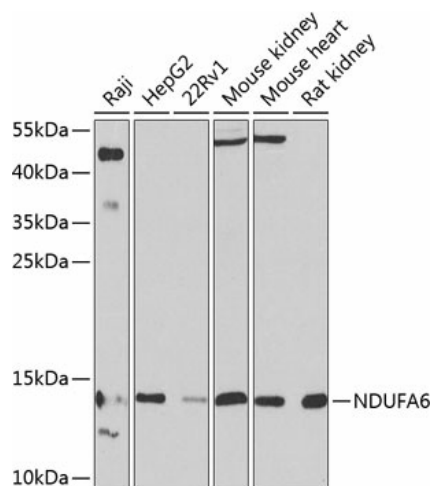
NDUFA6 Rabbit Polyclonal Antibody

Product data:

Product Type:	Primary Antibodies
Applications:	ELISA, WB
Recommended Dilution:	WB, 1:500 - 1:2000 ELISA, Recommended starting concentration is 1 µg/mL. Please optimize the concentration based on your specific assay requirements.
Reactivity:	Human, Mouse, Rat
Modifications:	Unmodified
Host:	Rabbit
Isotype:	IgG
Clonality:	Polyclonal
Formulation:	Buffer: PBS with 0.02% sodium azide, 50% glycerol, pH 7.3.
Concentration:	lot specific
Purification:	Affinity purification
Conjugation:	Unconjugated
Storage:	Store at -20°C. Avoid freeze / thaw cycles.
Stability:	Shelf life: one year from despatch.
Predicted Protein Size:	15kDa
Gene Name:	NADH:ubiquinone oxidoreductase subunit A6
Database Link:	Entrez Gene 4700 Human P56556
Background:	This gene encodes a member of the LYR family of proteins that contain a highly conserved tripeptide (LYR) motif near the N-terminus. The encoded protein is an accessory subunit of NADH: ubiquinone oxidoreductase (Complex I), which is the largest enzyme of the mitochondrial membrane respiratory chain. Complex I functions in electron transfer from NADH to the respiratory chain.
Synonyms:	B14; CI-B14; LYRM6; NADHB14



[View online »](#)

Product images:


Western blot analysis of various lysates using NDUFA6 Rabbit pAb (TA378998) at 1:1000 dilution.

Secondary antibody: HRP-conjugated Goat anti-Rabbit IgG (H+L) (AS014) at 1:10000 dilution.

Lysates/proteins: 25µg per lane.

Blocking buffer: 3% nonfat dry milk in TBST.

Detection: ECL Basic Kit (RM00020).

Exposure time: 90s.