

Product datasheet for **TA378971**

NCR2 Rabbit Polyclonal Antibody

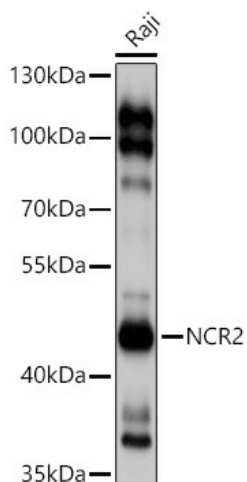
Product data:

Product Type:	Primary Antibodies
Applications:	WB
Recommended Dilution:	WB,1:200 - 1:2000
Reactivity:	Human
Modifications:	Unmodified
Host:	Rabbit
Isotype:	IgG
Clonality:	Polyclonal
Immunogen:	Recombinant fusion protein containing a sequence corresponding to amino acids 22-192 of human NCR2 (NP_004819.2).
Formulation:	Buffer: PBS with 0.02% sodium azide,50% glycerol,pH7.3.
Concentration:	lot specific
Purification:	Affinity purification
Conjugation:	Unconjugated
Storage:	Store at -20°C. Avoid freeze / thaw cycles.
Stability:	Shelf life: one year from despatch.
Predicted Protein Size:	28kDa/29kDa/30kDa
Gene Name:	natural cytotoxicity triggering receptor 2
Database Link:	Entrez Gene 9436 Human O95944
Background:	Cytotoxicity-activating receptor that may contribute to the increased efficiency of activated natural killer (NK cells to mediate tumor cell lysis.
Synonyms:	CD336; dJ149M18.1; LY95; NK-p44; NKp44



[View online »](#)

Product images:



Western blot analysis of extracts of Raji cells, using NCR2 antibody (TA378971) at 1:1000 dilution. | Secondary antibody: HRP Goat Anti-Rabbit IgG (H+L) at 1:10000 dilution. | Lysates/proteins: 25ug per lane. | Blocking buffer: 3% nonfat dry milk in TBST. | Detection: ECL Basic Kit . | Exposure time: 10s.