

## Product datasheet for **TA378949S**

### CNAP1 (NCAPD2) Rabbit Polyclonal Antibody

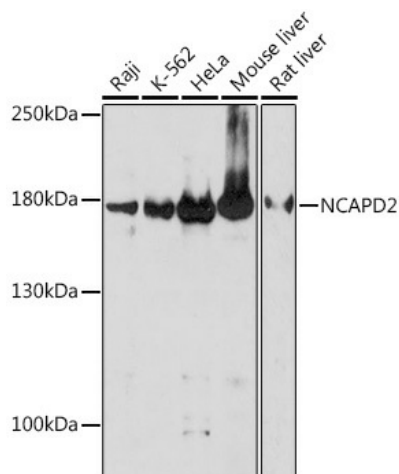
#### Product data:

|                         |   |
|-------------------------|---|
| Product Type:           | Primary Antibodies  |
| Applications:           | ELISA, ICC/IF, WB   |
| Recommended Dilution:   | WB, 1:500 - 1:2000<br>IF/ICC, 1:50 - 1:200<br>ELISA, Recommended starting concentration is 1 µg/mL. Please optimize the concentration based on your specific assay requirements.  |
| Reactivity:             | Human, Mouse, Rat   |
| Host:                   | Rabbit  |
| Isotype:                | IgG   |
| Clonality:              | Polyclonal  |
| Formulation:            | Buffer: PBS with 0.02% sodium azide, 50% glycerol, pH7.3.   |
| Concentration:          | lot specific  |
| Purification:           | Affinity purification   |
| Conjugation:            | Unconjugated  |
| Storage:                | Store at -20°C. Avoid freeze / thaw cycles.   |
| Stability:              | Shelf life: one year from despatch.   |
| Predicted Protein Size: | 157kDa  |
| Gene Name:              | non-SMC condensin I complex subunit D2  |
| Database Link:          | <a href="#">Entrez Gene 9918 Human Q15021</a>   |
| Background:             | Enables histone binding activity. Involved in mitotic chromosome condensation. Located in condensed chromosome; cytosol; and nucleoplasm. Part of condensin complex. Colocalizes with cytoplasm and nuclear chromosome. Implicated in primary autosomal recessive microcephaly. |
| Synonyms:               | CAP-D2; CAPD2; CNAP1; hCAP-D2; KIAA0159   |



[View online »](#)

## Product images:



Western blot analysis of various lysates using NCAPD2 Rabbit pAb (TA378949S) at 1:1000 dilution.

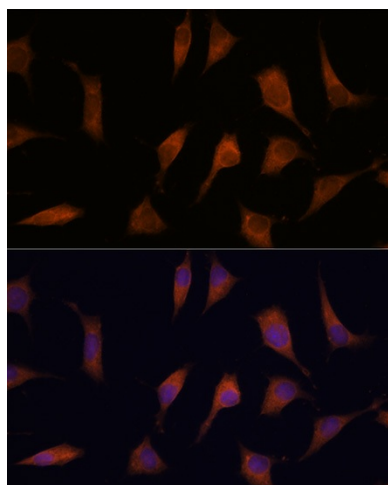
Secondary antibody: HRP-conjugated Goat anti-Rabbit IgG (H+L) (AS014) at 1:10000 dilution.

Lysates/proteins: 25µg per lane.

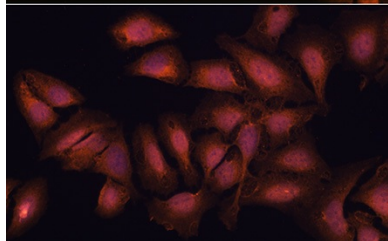
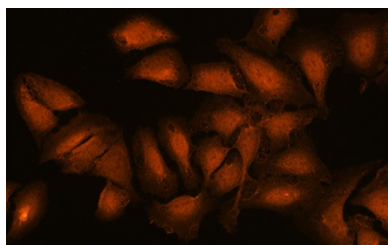
Blocking buffer: 3% nonfat dry milk in TBST.

Detection: ECL Basic Kit (RM00020).

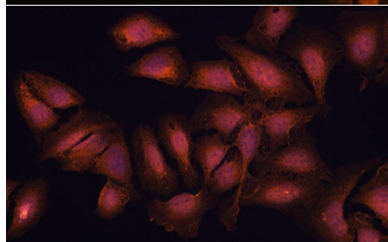
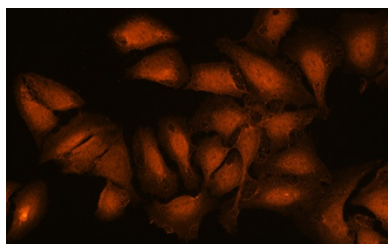
Exposure time: 180s.



Immunofluorescence analysis of C6 cells using NCAPD2 Rabbit pAb (TA378949S) at dilution of 1:100. Blue: DAPI for nuclear staining.



Immunofluorescence analysis of L929 cells using NCAPD2 Rabbit pAb ([TA378949]) at dilution of 1:100. Blue: DAPI for nuclear staining.



Immunofluorescence analysis of U2OS cells using NCAPD2 Rabbit pAb ([TA378949]) at dilution of 1:100. Blue: DAPI for nuclear staining.