

## Product datasheet for **TA378937S**

### **NAT8B Rabbit Polyclonal Antibody**

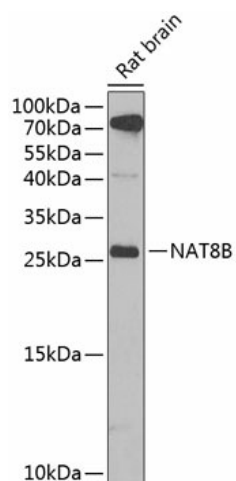
#### **Product data:**

Product Type:	Primary Antibodies
Applications:	ELISA, IHC, WB
Recommended Dilution:	WB, 1:500 - 1:2000 IHC-P, 1:50 - 1:200 ELISA, Recommended starting concentration is 1 µg/mL. Please optimize the concentration based on your specific assay requirements.
Reactivity:	Human, Mouse, Rat
Modifications:	Unmodified
Host:	Rabbit
Isotype:	IgG
Clonality:	Polyclonal
Formulation:	Buffer: PBS with 0.02% sodium azide, 50% glycerol, pH 7.3.
Concentration:	lot specific
Purification:	Affinity purification
Conjugation:	Unconjugated
Storage:	Store at -20°C. Avoid freeze / thaw cycles.
Stability:	Shelf life: one year from despatch.
Predicted Protein Size:	25kDa
Gene Name:	N-acetyltransferase 8B (putative, gene/pseudogene)
Database Link:	<a href="#">Entrez Gene 51471 Human Q9UHF3</a>
Background:	This gene is highly similar to the N-acetyltransferase 8 (NAT8) gene which encodes a kidney and liver protein with homology to bacterial acetyltransferases involved in drug resistance. This gene is localized on chromosome 2 in the vicinity of the NAT8 gene and represents a human-specific transcribed pseudogene of NAT8. This gene contains two common polymorphic nonsense mutations that disrupt the active site of the protein. In the extremely rare event when both nonsense mutations are absent, the predicted protein would contain a complete acetyltransferase domain and would be identical in length to NAT8.

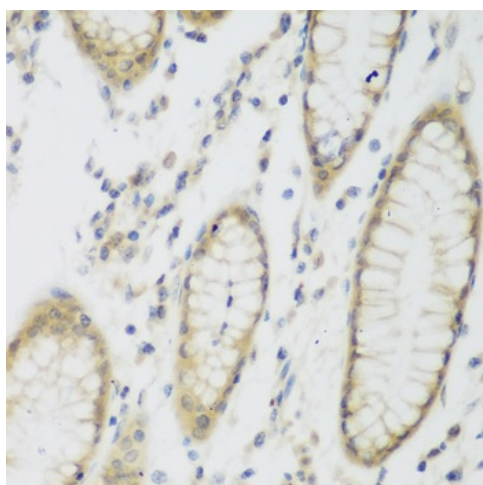

[View online »](#)

**Synonyms:** CML2; Hcml2; MGC97061; NAT8BP

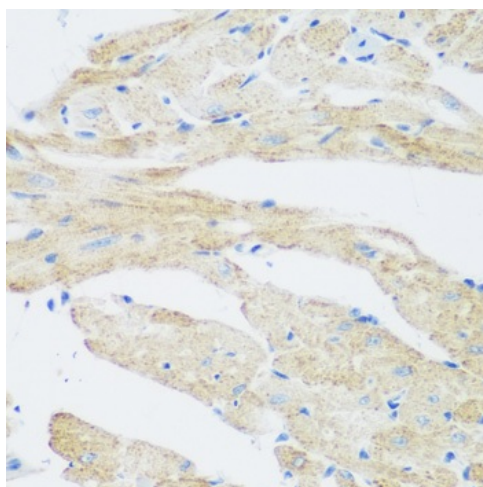
**Product images:**



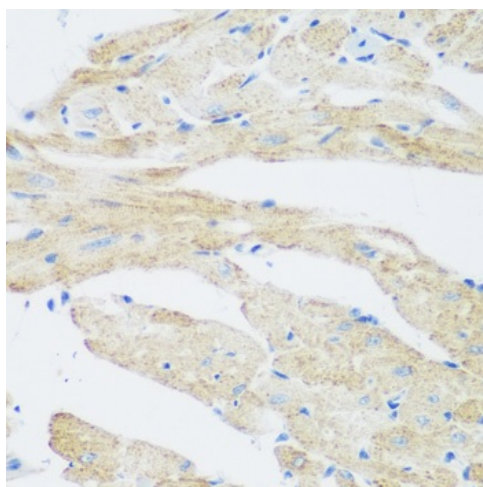
Western blot analysis of lysates from rat brain



Immunohistochemistry analysis of paraffin-embedded Rat kidney using NAT8B Rabbit pAb ([TA378937]) at dilution of 1:200 (40x lens). Microwave antigen retrieval performed with 0.01M PBS Buffer (pH 7.2) prior to IHC staining.



Immunohistochemistry analysis of paraffin-embedded Human stomach using NAT8B Rabbit pAb ([TA378937]) at dilution of 1:200 (40x lens). Microwave antigen retrieval performed with 0.01M PBS Buffer (pH 7.2) prior to IHC staining.



Immunohistochemistry analysis of paraffin-embedded Mouse heart using NAT8B Rabbit pAb ([TA378937]) at dilution of 1:200 (40x lens). Microwave antigen retrieval performed with 0.01M PBS Buffer (pH 7.2) prior to IHC staining.