

Product datasheet for **TA378912S**

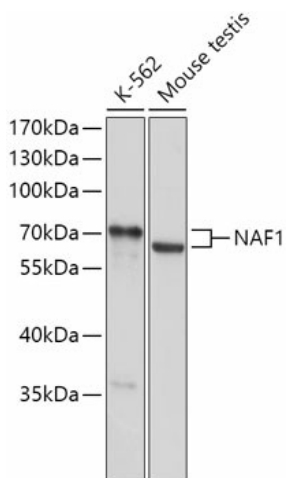
NAF1 Rabbit Polyclonal Antibody

Product data:

Product Type:	Primary Antibodies
Applications:	ELISA, WB
Recommended Dilution:	WB, 1:500 - 1:2000 ELISA, Recommended starting concentration is 1 µg/mL. Please optimize the concentration based on your specific assay requirements.
Reactivity:	Human, Mouse, Rat
Modifications:	Unmodified
Host:	Rabbit
Isotype:	IgG
Clonality:	Polyclonal
Formulation:	Buffer: PBS with 0.02% sodium azide, 50% glycerol, pH 7.3.
Concentration:	lot specific
Purification:	Affinity purification
Conjugation:	Unconjugated
Storage:	Store at -20°C. Avoid freeze / thaw cycles.
Stability:	Shelf life: one year from despatch.
Predicted Protein Size:	54kDa
Gene Name:	nuclear assembly factor 1 ribonucleoprotein
Database Link:	Entrez Gene 92345 Human Q96HR8
Background:	Enables identical protein binding activity and telomerase RNA binding activity. Involved in regulation of nucleobase-containing compound metabolic process; ribosome biogenesis; and telomerase holoenzyme complex assembly. Located in nucleoplasm. Part of sno(s)RNA-containing ribonucleoprotein complex.
Synonyms:	hNAF1; KIAA0113; TNIP1


[View online »](#)

Product images:



Western blot analysis of various lysates using NAF1 Rabbit pAb ([TA378912]) at 1:1000 dilution. Secondary antibody: HRP-conjugated Goat anti-Rabbit IgG (H+L) (AS014) at 1:10000 dilution. Lysates/proteins: 25µg per lane. Blocking buffer: 3% nonfat dry milk in TBST. Detection: ECL Basic Kit (RM00020). Exposure time: 60s.