

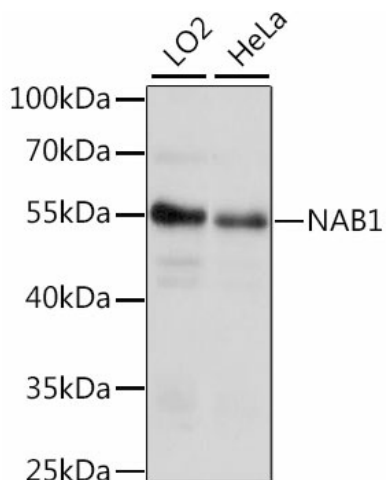
## Product datasheet for **TA378904S**

### NAB1 Rabbit Polyclonal Antibody

#### Product data:

Product Type:	Primary Antibodies
Applications:	ELISA, WB
Recommended Dilution:	WB, 1:500 - 1:2000 ELISA, Recommended starting concentration is 1 µg/mL. Please optimize the concentration based on your specific assay requirements.
Reactivity:	Human, Mouse
Modifications:	Unmodified
Host:	Rabbit
Isotype:	IgG
Clonality:	Polyclonal
Formulation:	PBS with 0.05% proclin300, 50% glycerol, pH7.3.
Concentration:	lot specific
Purification:	Affinity purification
Conjugation:	Unconjugated
Storage:	Store at -20°C. Avoid freeze / thaw cycles.
Stability:	Shelf life: one year from despatch.
Predicted Protein Size:	54kDa
Gene Name:	NGFI-A binding protein 1
Database Link:	<a href="#">Entrez Gene 4664 Human Q13506</a>
Background:	Predicted to enable transcription coregulator activity. Predicted to be involved in regulation of transcription, DNA-templated. Predicted to act upstream of or within endochondral ossification; nervous system development; and regulation of epidermis development. Predicted to be located in nucleoplasm. Predicted to be active in nucleus.
Synonyms:	OTTHUMP00000205860


[View online »](#)

**Product images:**


Western blot analysis of various lysates using NAB1 Rabbit pAb ([TA378904]) at 1:1000 dilution. Secondary antibody: HRP-conjugated Goat anti-Rabbit IgG (H+L) (AS014) at 1:10000 dilution. Lysates/proteins: 25µg per lane. Blocking buffer: 3% nonfat dry milk in TBST. Detection: ECL Basic Kit (RM00020). Exposure time: 10s.