

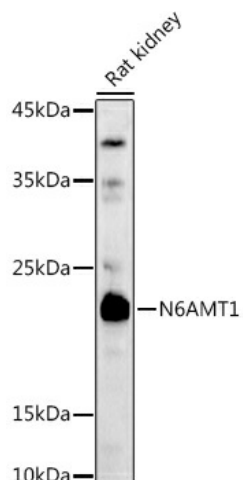
Product datasheet for **TA378895S**

HEMK2 (N6AMT1) Rabbit Polyclonal Antibody

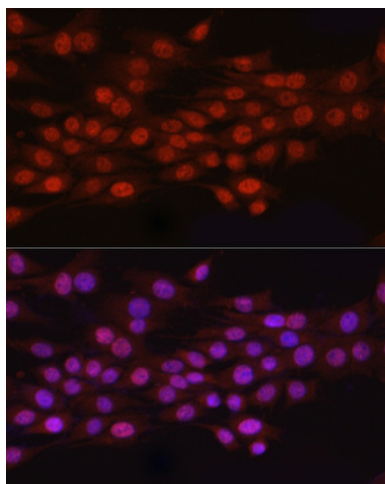
Product data:

Product Type:	Primary Antibodies
Applications:	ELISA, ICC/IF, WB
Recommended Dilution:	WB, 1:500 - 1:1000 IF/ICC, 1:50 - 1:200 ELISA, Recommended starting concentration is 1 µg/mL. Please optimize the concentration based on your specific assay requirements.
Reactivity:	Human, Mouse, Rat
Modifications:	Unmodified
Host:	Rabbit
Isotype:	IgG
Clonality:	Polyclonal
Formulation:	Buffer: PBS with 0.02% sodium azide, 50% glycerol, pH 7.3.
Concentration:	lot specific
Purification:	Affinity purification
Conjugation:	Unconjugated
Storage:	Store at -20°C. Avoid freeze / thaw cycles.
Stability:	Shelf life: one year from despatch.
Predicted Protein Size:	23kDa
Gene Name:	N-6 adenine-specific DNA methyltransferase 1 (putative)
Database Link:	Entrez Gene 29104 Human Q9Y5N5
Background:	This gene encodes an N(6)-adenine-specific DNA methyltransferase. The encoded enzyme may be involved in the methylation of release factor I during translation termination. This enzyme is also involved in converting the arsenic metabolite monomethylarsonous acid to the less toxic dimethylarsonic acid. Alternative splicing of this gene results in multiple transcript variants. A related pseudogene has been identified on chromosome 11.
Synonyms:	C21orf127; HEMK2; M.HsaHemK2P; MGC19995; MTQ2; N6-DNA-methyltransferase; N6AMT; PRED28


[View online »](#)

Product images:


Western blot analysis of lysates from Rat kidney



Immunofluorescence analysis of PC-12 cells using N6AMT1/HEMK2 Rabbit pAb ([TA378895]) at dilution of 1:100 (40x lens). Secondary antibody: Cy3-conjugated Goat anti-Rabbit IgG (H+L) (AS007) at 1:500 dilution. Blue: DAPI for nuclear staining.