

Product datasheet for **TA378891S**

Myeloid zinc finger 1 (MZF1) Rabbit Polyclonal Antibody

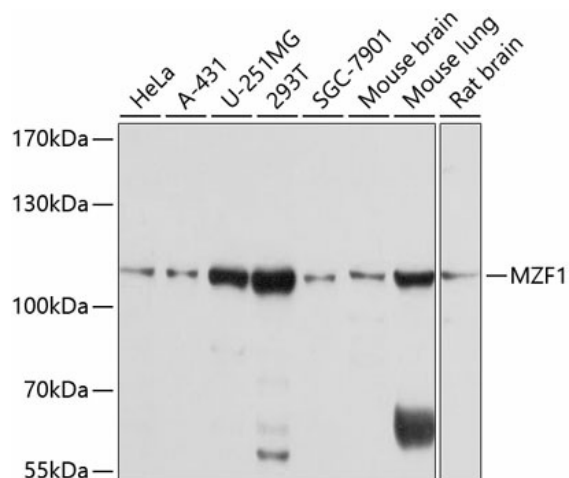
Product data:

Product Type:	Primary Antibodies
Applications:	ELISA, WB
Recommended Dilution:	WB, 1:500 - 1:2000 ELISA, Recommended starting concentration is 1 µg/mL. Please optimize the concentration based on your specific assay requirements.
Reactivity:	Human, Mouse, Rat
Modifications:	Unmodified
Host:	Rabbit
Isotype:	IgG
Clonality:	Polyclonal
Formulation:	Buffer: PBS with 0.02% sodium azide, 50% glycerol, pH 7.3.
Concentration:	lot specific
Purification:	Affinity purification
Conjugation:	Unconjugated
Storage:	Store at -20°C. Avoid freeze / thaw cycles.
Stability:	Shelf life: one year from despatch.
Predicted Protein Size:	82kDa
Gene Name:	myeloid zinc finger 1
Database Link:	Entrez Gene 7593 Human P28698
Background:	Enables DNA-binding transcription factor activity, RNA polymerase II-specific; RNA polymerase II cis-regulatory region sequence-specific DNA binding activity; and protein homodimerization activity. Involved in negative regulation of transcription by RNA polymerase II and positive regulation of transcription by RNA polymerase II. Located in nucleoplasm.
Synonyms:	MZF; MZF-1; MZF1B; Zfp98; ZNF42; ZSCAN6



[View online »](#)

Product images:



Western blot analysis of various lysates using MZF1 Rabbit pAb (TA378891S) at 1:1000 dilution. Secondary antibody: HRP-conjugated Goat anti-Rabbit IgG (H+L) (AS014) at 1:10000 dilution. Lysates/proteins: 25µg per lane. Blocking buffer: 3% nonfat dry milk in TBST. Detection: ECL Basic Kit (RM00020). Exposure time: 3s.