

## Product datasheet for **TA378890**

### Proapoptotic Caspase Adaptor Protein (MZB1) Rabbit Polyclonal Antibody

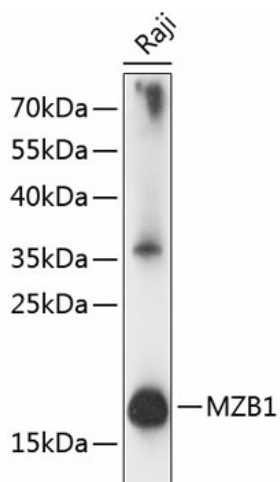
#### Product data:

Product Type:	Primary Antibodies
Applications:	ELISA, IHC, WB
Recommended Dilution:	WB, 1:500 - 1:2000 IHC-P, 1:50 - 1:100 ELISA, Recommended starting concentration is 1 µg/mL. Please optimize the concentration based on your specific assay requirements.
Reactivity:	Human, Mouse, Rat
Modifications:	Unmodified
Host:	Rabbit
Isotype:	IgG
Clonality:	Polyclonal
Formulation:	Buffer: PBS with 0.01% thimerosal, 50% glycerol, pH7.3.
Concentration:	lot specific
Purification:	Affinity purification
Conjugation:	Unconjugated
Storage:	Store at -20°C. Avoid freeze / thaw cycles.
Stability:	Shelf life: one year from despatch.
Predicted Protein Size:	21kDa
Gene Name:	marginal zone B and B1 cell specific protein
Database Link:	<a href="#">Entrez Gene 51237 Human Q8WU39</a>
Background:	Involved in positive regulation of cell population proliferation. Located in cytoplasm and extracellular region.
Synonyms:	MEDA-7; PACAP; pERp1

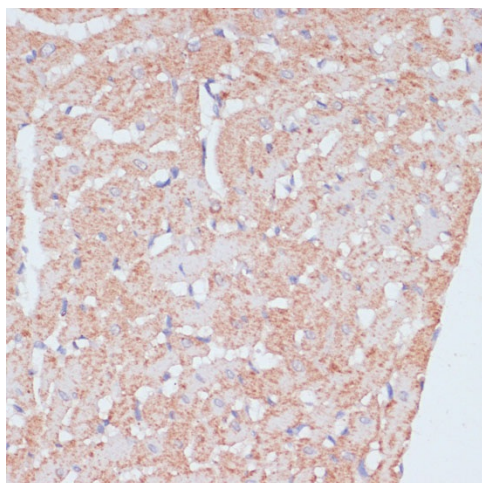


[View online »](#)

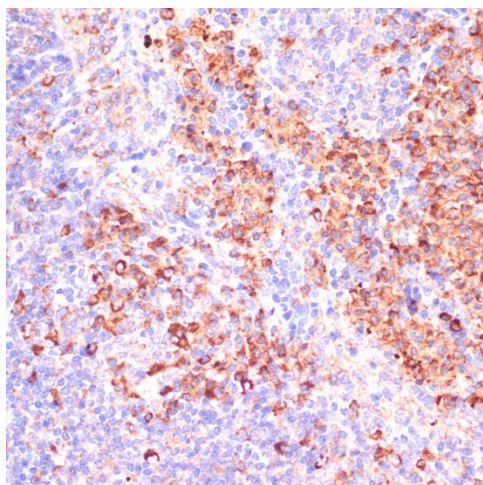
## Product images:



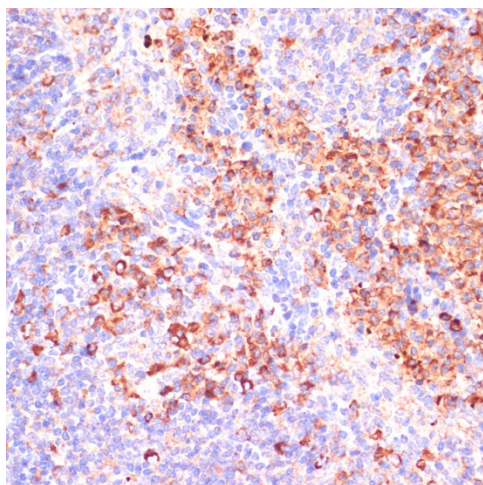
Western blot analysis of lysates from Raji cells



Immunohistochemistry analysis of paraffin-embedded Rat heart using MZB1 Rabbit pAb (TA378890) at dilution of 1:100 (40x lens). Microwave antigen retrieval performed with 0.01M PBS Buffer (pH 7.2) prior to IHC staining.



Immunohistochemistry analysis of paraffin-embedded Human colon carcinoma using MZF1 Rabbit pAb (TA378890) at dilution of 1:100 (40x lens). Microwave antigen retrieval performed with 0.01M PBS Buffer (pH 7.2) prior to IHC staining.



Immunohistochemistry analysis of paraffin-embedded Mouse spleen using MZF1 Rabbit pAb (TA378890) at dilution of 1:100 (40x lens). Microwave antigen retrieval performed with 0.01M PBS Buffer (pH 7.2) prior to IHC staining.