

Product datasheet for **TA37888S**

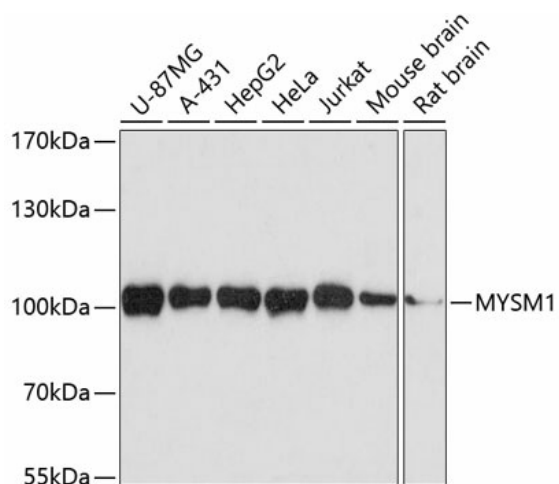
MYSM1 Rabbit Polyclonal Antibody

Product data:

Product Type:	Primary Antibodies
Applications:	ELISA, WB
Recommended Dilution:	WB, 1:500 - 1:2000 ELISA, Recommended starting concentration is 1 µg/mL. Please optimize the concentration based on your specific assay requirements.
Reactivity:	Human, Mouse, Rat
Modifications:	Unmodified
Host:	Rabbit
Isotype:	IgG
Clonality:	Polyclonal
Formulation:	Buffer: PBS with 0.02% sodium azide, 50% glycerol, pH 7.3.
Concentration:	lot specific
Purification:	Affinity purification
Conjugation:	Unconjugated
Storage:	Store at -20°C. Avoid freeze / thaw cycles.
Stability:	Shelf life: one year from despatch.
Predicted Protein Size:	95kDa
Gene Name:	Myb like, SWIRM and MPN domains 1
Database Link:	Entrez Gene 114803 Human Q5VWJ2
Background:	Enables histone binding activity; peptidase activity; and transcription coactivator activity. Involved in several processes, including chromatin remodeling; monoubiquitinated histone H2A deubiquitination; and positive regulation of transcription by RNA polymerase II. Located in nucleolus and nucleoplasm. Part of protein-containing complex. Implicated in diabetic retinopathy.
Synonyms:	2A-DUB; 2ADUB; DKFZp779J1554; DKFZp779J1721; KIAA1915; RP4-592A1.1



[View online »](#)

Product images:


Western blot analysis of various lysates using MYSM1 Rabbit pAb (TA378888) at 1:3000 dilution.

Secondary antibody: HRP-conjugated Goat anti-Rabbit IgG (H+L) (AS014) at 1:10000 dilution.

Lysates/proteins: 25µg per lane.

Blocking buffer: 3% nonfat dry milk in TBST.

Detection: ECL Basic Kit (RM00020).

Exposure time: 90s.