

Product datasheet for **TA378869S**

MYO1D Rabbit Polyclonal Antibody

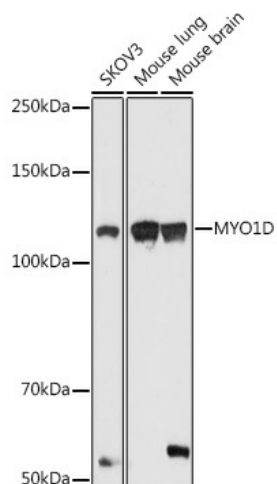
Product data:

Product Type:	Primary Antibodies
Applications:	ELISA, WB
Recommended Dilution:	WB, 1:500 - 1:1000 ELISA, Recommended starting concentration is 1 µg/mL. Please optimize the concentration based on your specific assay requirements.
Reactivity:	Human, Mouse
Modifications:	Unmodified
Host:	Rabbit
Isotype:	IgG
Clonality:	Polyclonal
Formulation:	Buffer: PBS with 0.02% sodium azide, 50% glycerol, pH 7.3.
Concentration:	lot specific
Purification:	Affinity purification
Conjugation:	Unconjugated
Storage:	Store at -20°C. Avoid freeze / thaw cycles.
Stability:	Shelf life: one year from despatch.
Predicted Protein Size:	116kDa
Gene Name:	myosin ID
Database Link:	Entrez Gene 4642 Human O94832
Background:	Enables protein domain specific binding activity. Predicted to be involved in actin filament organization; early endosome to recycling endosome transport; and vesicle transport along actin filament. Located in extracellular exosome.
Synonyms:	KIAA0727; myr4



[View online »](#)

Product images:



Western blot analysis of various lysates using MYO1D Rabbit pAb (TA378869) at 1:1000 dilution.

Secondary antibody: HRP-conjugated Goat anti-Rabbit IgG (H+L) (AS014) at 1:10000 dilution.

Lysates/proteins: 25µg per lane.

Blocking buffer: 3% nonfat dry milk in TBST.

Detection: ECL Basic Kit (RM00020).

Exposure time: 180s.