

Product datasheet for **TA378858**

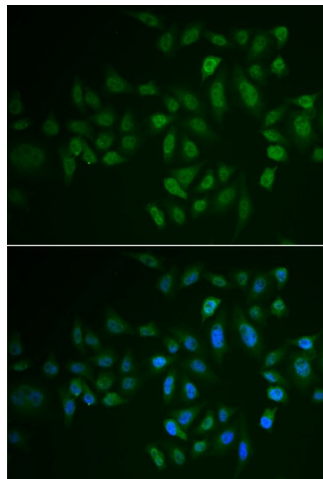
MYLK3 Rabbit Polyclonal Antibody

Product data:

Product Type:	Primary Antibodies
Applications:	ICC/IF, WB
Recommended Dilution:	WB,1:500 - 1:2000 IF,1:50 - 1:100
Reactivity:	Human, Mouse
Modifications:	Unmodified
Host:	Rabbit
Isotype:	IgG
Clonality:	Polyclonal
Immunogen:	Recombinant fusion protein containing a sequence corresponding to amino acids 1-240 of human MYLK3 (NP_872299.2).
Formulation:	Buffer: PBS with 0.02% sodium azide,50% glycerol,pH7.3.
Concentration:	lot specific
Purification:	Affinity purification
Conjugation:	Unconjugated
Storage:	Store at -20°C. Avoid freeze / thaw cycles.
Stability:	Shelf life: one year from despatch.
Predicted Protein Size:	52kDa/88kDa
Gene Name:	myosin light chain kinase 3
Database Link:	Entrez Gene 91807 Human Q32MK0
Background:	Phosphorylation of cardiac myosin heavy chains (see MYH7B, MIM 609928) and light chains (see MYL2, MIM 160781) by a kinase, such as MYLK3, potentiates the force and rate of cross-bridge recruitment in cardiac myocytes (Chan et al., 2008 [PubMed 18202317]).[supplied by OMIM, Jul 2008]
Synonyms:	caMLCK; MGC126319; MGC126320; MLCK; MLCK2



[View online »](#)

Product images:

Immunofluorescence analysis of U2OS cells using MYLK3 antibody (TA378858). Blue: DAPI for nuclear staining.