

Product datasheet for **TA378852**

MYL9 Rabbit Polyclonal Antibody

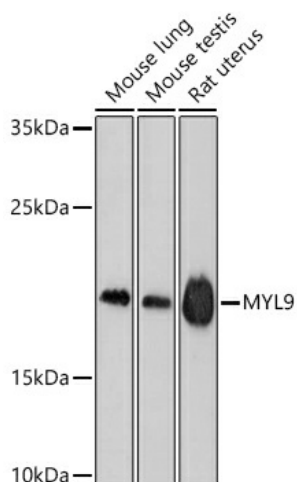
Product data:

Product Type:	Primary Antibodies
Applications:	ICC/IF, WB
Recommended Dilution:	WB, 1:500 - 1:2000 IF, 1:50 - 1:200
Reactivity:	Human, Mouse, Rat
Modifications:	Unmodified
Host:	Rabbit
Isotype:	IgG
Clonality:	Polyclonal
Immunogen:	A synthetic peptide corresponding to a sequence within amino acids 1-100 of human MYL9 (NP_006088.2).
Formulation:	Buffer: PBS with 0.02% sodium azide, 50% glycerol, pH 7.3.
Concentration:	lot specific
Purification:	Affinity purification
Conjugation:	Unconjugated
Storage:	Store at -20°C. Avoid freeze / thaw cycles.
Stability:	Shelf life: one year from despatch.
Predicted Protein Size:	13kDa/19kDa
Gene Name:	myosin light chain 9
Database Link:	Entrez Gene 10398 Human P24844
Background:	Myosin, a structural component of muscle, consists of two heavy chains and four light chains. The protein encoded by this gene is a myosin light chain that may regulate muscle contraction by modulating the ATPase activity of myosin heads. The encoded protein binds calcium and is activated by myosin light chain kinase. Two transcript variants encoding different isoforms have been found for this gene.
Synonyms:	LC20; MGC3505; MLC-2C; MLC2; MRLC1; MYRL2

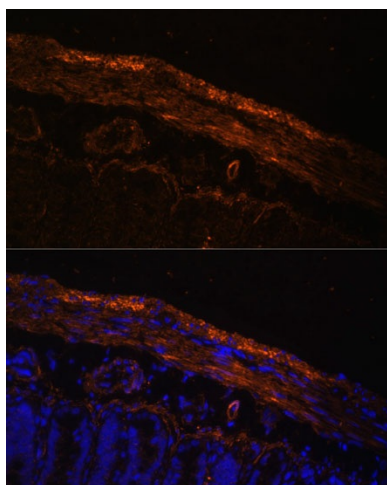


[View online »](#)

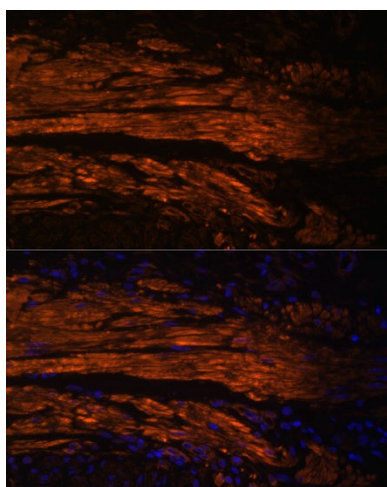
Product images:



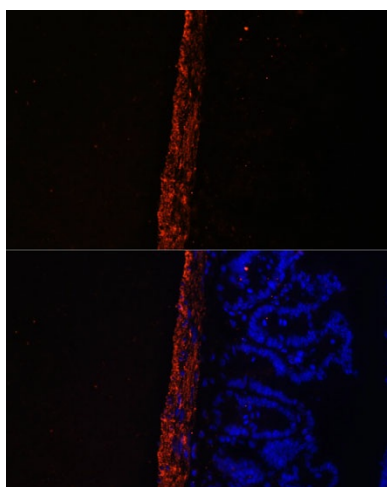
Western blot analysis of extracts of various cell lines, using MYL9 antibody (TA378852) at 1:1000 dilution. | Secondary antibody: HRP Goat Anti-Rabbit IgG (H+L) at 1:10000 dilution. | Lysates/proteins: 25ug per lane. | Blocking buffer: 3% nonfat dry milk in TBST. | Detection: ECL Basic Kit . | Exposure time: 90s.



Immunofluorescence analysis of Rat intestine using MYL9 antibody (TA378852) at dilution of 1:100. Blue: DAPI for nuclear staining.



Immunofluorescence analysis of Human colon carcinoma using MYL9 antibody (TA378852) at dilution of 1:100. Blue: DAPI for nuclear staining.



Immunofluorescence analysis of Mouse intestine using MYL9 antibody (TA378852) at dilution of 1:100. Blue: DAPI for nuclear staining.