

Product datasheet for **TA378834**

Myosin (MYH4) Rabbit Polyclonal Antibody

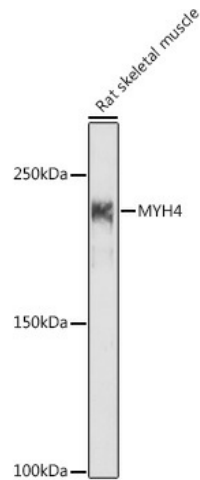
Product data:

Product Type:	Primary Antibodies
Applications:	ICC/IF, IHC, WB
Recommended Dilution:	WB,1:200 - 1:2000 IHC,1:50 - 1:200 IF,1:50 - 1:200
Reactivity:	Human, Mouse, Rat
Modifications:	Unmodified
Host:	Rabbit
Isotype:	IgG
Clonality:	Polyclonal
Immunogen:	A synthetic peptide corresponding to a sequence within amino acids 1450-1550 of human MYH4 (NP_060003.2).
Formulation:	Buffer: PBS with 0.02% sodium azide,50% glycerol,pH7.3.
Concentration:	lot specific
Purification:	Affinity purification
Conjugation:	Unconjugated
Storage:	Store at -20°C. Avoid freeze / thaw cycles.
Stability:	Shelf life: one year from despatch.
Gene Name:	myosin, heavy chain 4, skeletal muscle
Database Link:	Entrez Gene 4622 Human Q9Y623
Background:	Muscle contraction.
Synonyms:	MYH2B; MyHC-2B; MyHC-IIb

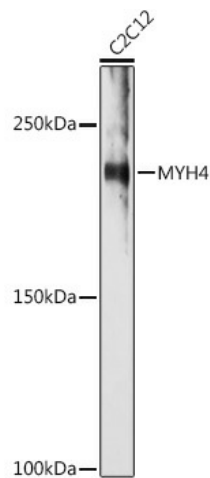


[View online »](#)

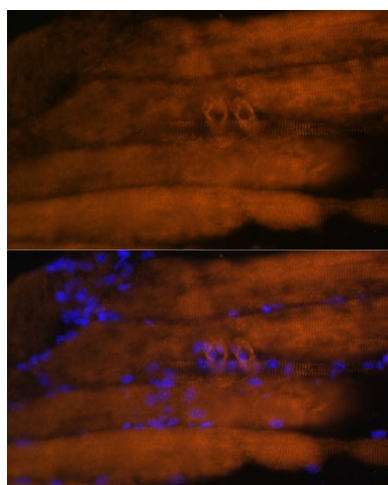
Product images:



Western blot analysis of extracts of Rat skeletal muscle, using MYH4 antibody (TA378834) at 1:1000 dilution. | Secondary antibody: HRP Goat Anti-Rabbit IgG (H+L) at 1:10000 dilution. | Lysates/proteins: 25ug per lane. | Blocking buffer: 3% nonfat dry milk in TBST. | Detection: ECL Basic Kit . | Exposure time: 1s.



Western blot analysis of extracts of C2C12 cells, using MYH4 antibody (TA378834) at 1:1000 dilution. | Secondary antibody: HRP Goat Anti-Rabbit IgG (H+L) at 1:10000 dilution. | Lysates/proteins: 25ug per lane. | Blocking buffer: 3% nonfat dry milk in TBST. | Detection: ECL Enhanced Kit . | Exposure time: 180s.



Immunofluorescence analysis of mouse skeletal muscle using MYH4 antibody (TA378834) at dilution of 1:100. Blue: DAPI for nuclear staining.