

Product datasheet for **TA378832**

MYH13 Rabbit Polyclonal Antibody

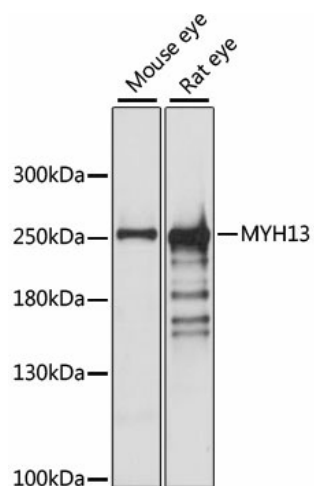
Product data:

| | |
|-------------------------|---|
| Product Type: | Primary Antibodies |
| Applications: | ICC/IF, WB |
| Recommended Dilution: | WB,1:500 - 1:2000 IHC,1:50 - 1:100 IF,1:50 - 1:100 |
| Reactivity: | Mouse, Rat |
| Modifications: | Unmodified |
| Host: | Rabbit |
| Isotype: | IgG |
| Clonality: | Polyclonal |
| Immunogen: | Recombinant fusion protein containing a sequence corresponding to amino acids 1240-1320 of human MYH13 (NP_003793.2). |
| Formulation: | Buffer: PBS with 0.02% sodium azide,50% glycerol,pH7.3. |
| Concentration: | lot specific |
| Purification: | Affinity purification |
| Conjugation: | Unconjugated |
| Storage: | Store at -20°C. Avoid freeze / thaw cycles. |
| Stability: | Shelf life: one year from despatch. |
| Predicted Protein Size: | 223kDa |
| Gene Name: | myosin, heavy chain 13, skeletal muscle |
| Database Link: | Q9UKX3 |
| Background: | Fast twitching myosin mediating the high-velocity and low-tension contractions of specific striated muscles. |
| Synonyms: | MyHC-eo |

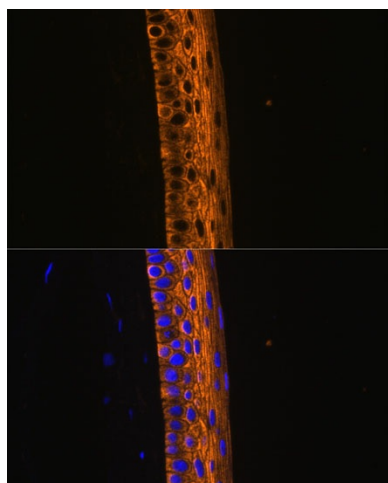


[View online »](#)

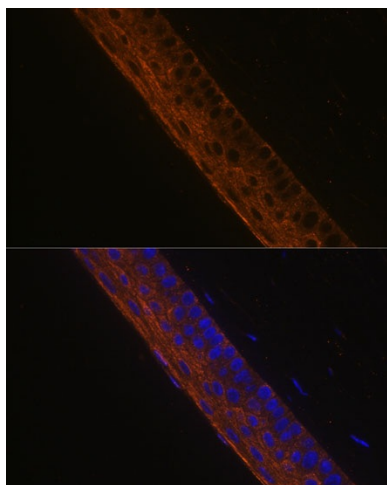
Product images:



Western blot analysis of extracts of various cell lines, using MYH13 antibody (TA378832) at 1:1000 dilution. | Secondary antibody: HRP Goat Anti-Rabbit IgG (H+L) at 1:10000 dilution. | Lysates/proteins: 25ug per lane. | Blocking buffer: 3% nonfat dry milk in TBST. | Detection: ECL Basic Kit. | Exposure time: 10s.



Immunofluorescence analysis of rat eye using MYH13 Polyclonal Antibody (TA378832) at dilution of 1:100 (40x lens). Blue: DAPI for nuclear staining.



Immunofluorescence analysis of mouse eye using MYH13 Polyclonal Antibody (TA378832) at dilution of 1:100 (40x lens). Blue: DAPI for nuclear staining.