

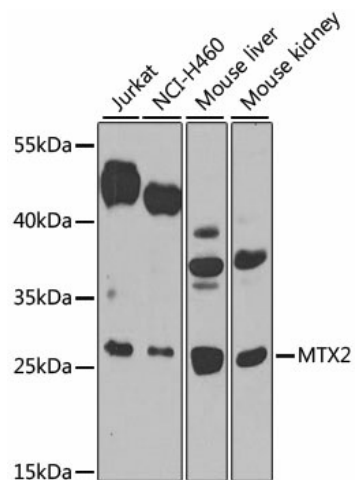
Product datasheet for **TA378796S**

MTX2 Rabbit Polyclonal Antibody

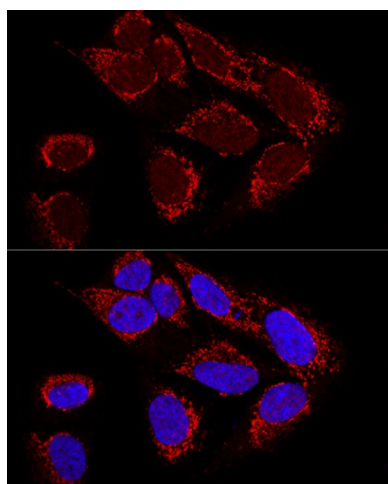
Product data:

| | |
|-------------------------|--|
| Product Type: | Primary Antibodies |
| Applications: | ELISA, ICC/IF, WB |
| Recommended Dilution: | WB, 1:1000 - 1:5000 IF/ICC, 1:50 - 1:200 ELISA, Recommended starting concentration is 1 µg/mL. Please optimize the concentration based on your specific assay requirements. |
| Reactivity: | Human, Mouse, Rat |
| Modifications: | Unmodified |
| Host: | Rabbit |
| Isotype: | IgG |
| Clonality: | Polyclonal |
| Formulation: | Buffer: PBS with 0.02% sodium azide, 50% glycerol, pH 7.3. |
| Concentration: | lot specific |
| Purification: | Affinity purification |
| Conjugation: | Unconjugated |
| Storage: | Store at -20°C. Avoid freeze / thaw cycles. |
| Stability: | Shelf life: one year from despatch. |
| Predicted Protein Size: | 30kDa |
| Gene Name: | metaxin 2 |
| Database Link: | Entrez Gene 10651 Human O75431 |
| Background: | The protein encoded by this gene is highly similar to the metaxin 2 protein from mouse, which has been shown to interact with the mitochondrial membrane protein metaxin 1. Because of this similarity, it is thought that the encoded protein is peripherally associated with the cytosolic face of the outer mitochondrial membrane, and that it is involved in the import of proteins into the mitochondrion. Alternative splicing results in multiple transcript variants. A related pseudogene has been identified on chromosome 7. |
| Synonyms: | MGC111067 |


[View online »](#)

Product images:


Western blot analysis of various lysates



Confocal immunofluorescence analysis of U2OS cells using MTX2 Rabbit pAb ([TA378796]) at dilution of 1:100. Blue: DAPI for nuclear staining.